

# LEESBURG. ICH-112

Narrow LotTraditional



### SPECIFICATIONS

|            |      |
|------------|------|
| SQ. FT.    | 1780 |
| BEDROOMS:  | 3    |
| BATHROOMS: | 3    |
| LEVELS:    | 2    |

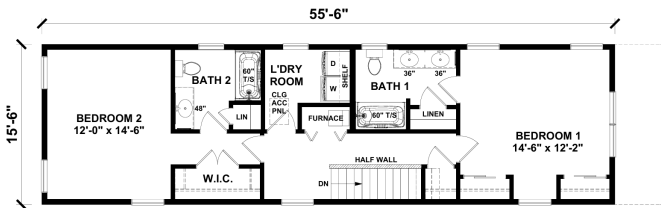
### OPTIONAL FEATURES

- ☒ Green Certification
- ☒ Energy Star

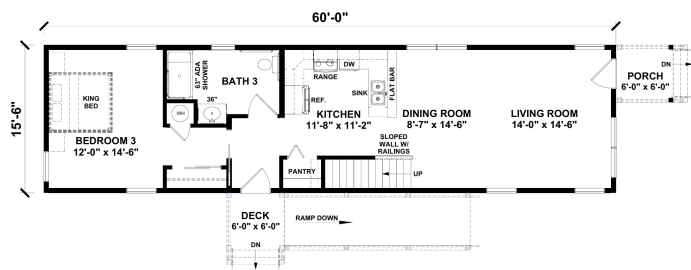
Included: Painted cabinets in kitchen, bathrooms, and utility room, laminate kitchen countertop, kitchen backsplash included stainless farmhouse kitchen sink, wood laminate plank flooring throughout, stairs with carpeting

Onsite by Others: Appliances not included, deck and porch onsite by others

### SECOND FLOOR



### FIRST FLOOR



YOUR  
NEW HOME  
CONSULTANT



**Hi, I'm Justin Bryant, your personal Modular Home Consultant**

I would be happy to help you with any questions you may have. You can contact me on my direct number at **(877) 410-6334** or email me at [justin.bryant@impresamodular.com](mailto:justin.bryant@impresamodular.com).