

TIDEWATER I. FHC-003

Cottage



SPECIFICATIONS

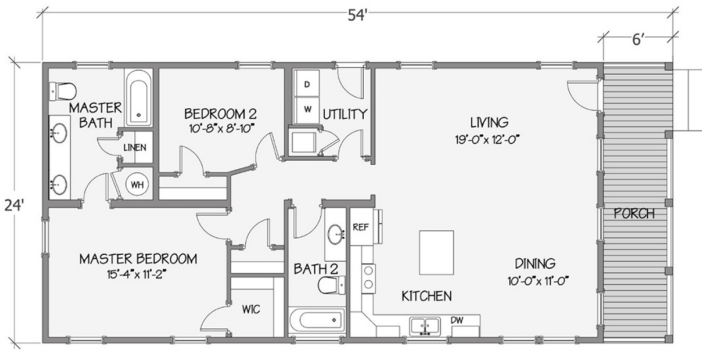
SQ. FT.	1296
BEDROOMS:	2
BATHROOMS:	2
LEVELS:	1

OPTIONAL FEATURES

- ☒ Green Certification
- ☒ Energy Star

The Tidewater I offers a compact and efficient design tailored for those seeking a simpler, yet comfortable living space. This charming residence features 2 bedrooms, 2 bathrooms, and 1296 square feet of efficiently used space, making it ideal for singles, couples, or small families. The layout maximizes the home’s footprint, ensuring that each room serves multiple purposes without sacrificing comfort or style. Perfect for those looking to downsize or maintain a manageable living space, the Tidewater provides all the essentials of modern living in a cozy, easy-to-maintain package. Experience the joy of less-is-more with the Tidewater, where every square inch is thoughtfully designed to enhance your daily living experience.

FIRST FLOOR



YOUR
NEW HOME
CONSULTANT



Hi, I'm Justin Bryant, your personal Modular Home Consultant

I would be happy to help you with any questions you may have. You can contact me on my direct number at **(877) 410-6334** or email me at justin.bryant@impresamodular.com.