

JASMINE I. FHM-005

Traditional



SPECIFICATIONS

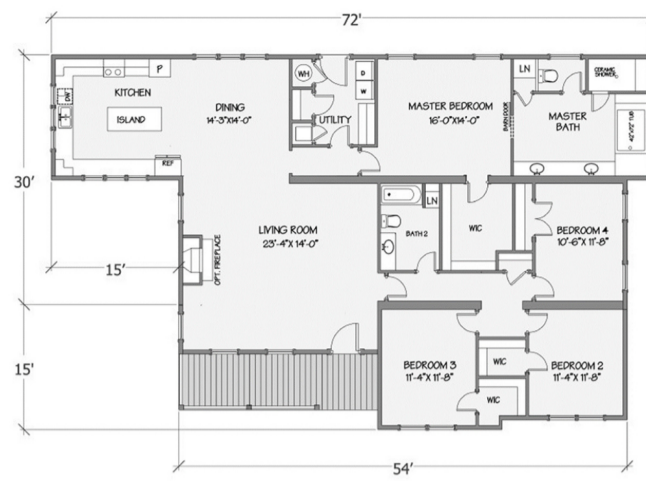
SQ. FT.	2700
BEDROOMS:	3
BATHROOMS:	2
LEVELS:	1

OPTIONAL FEATURES

- ☒ Green Certification
- ☒ Energy Star

The Jasmine I, offers a luxurious and expansive living experience tailored for those who demand space and elegance. This prestigious home features 3 substantial bedrooms, 2 full bathrooms, and an impressive 2700 square feet of living space, designed for comfort and sophistication. The architecture skillfully balances grand, open living areas for socializing and entertainment with private, secluded spaces for relaxation and rest. Each room in the Jasmine I is meticulously designed to showcase quality and style, ensuring that every inch serves both functional and aesthetic purposes. Ideal for families or those who entertain frequently, this home not only meets but exceeds the expectations of a modern, luxurious residence. Step into the Jasmine I and embrace a lifestyle of refined elegance and unparalleled comfort.

FIRST FLOOR



YOUR
NEW HOME
CONSULTANT

Hi, I'm , your personal Modular Home Consultant

I would be happy to help you with any questions you may have. You can contact me on my direct number at or email me at .