

AZALEA I. FHM-004

Traditional



SPECIFICATIONS

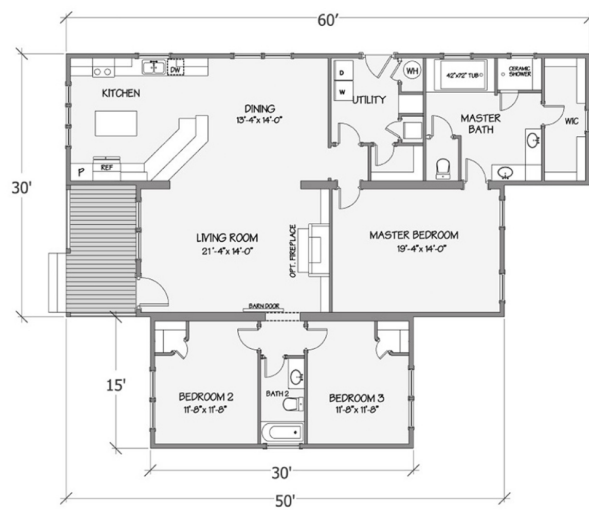
SQ. FT.	2136
BEDROOMS:	4
BATHROOMS:	2
LEVELS:	1

OPTIONAL FEATURES

- ☒ Green Certification
- ☒ Energy Star

The Azalea I , encapsulates the perfect blend of modern sophistication and practical living. This graceful residence features 3 luxurious bedrooms, 2 full bathrooms, and a spacious 2136 square feet of elegantly designed living space. The thoughtful floor plan seamlessly integrates the communal areas with the private retreats, ensuring a harmonious balance for both entertainment and relaxation. Ideal for families or individuals seeking a refined lifestyle, the Azalea I offers an inviting atmosphere that caters to both dynamic social gatherings and peaceful personal moments. With its modern amenities and exquisite design, the Azalea I is more than just a home—it's a sanctuary that enhances every aspect of your daily living.

FIRST FLOOR



YOUR
NEW HOME
CONSULTANT

Hi, I'm , your personal Modular Home Consultant

I would be happy to help you with any questions you may have. You can contact me on my direct number at or email me at .