

NANDINA I . FHM-002

Traditional



SPECIFICATIONS

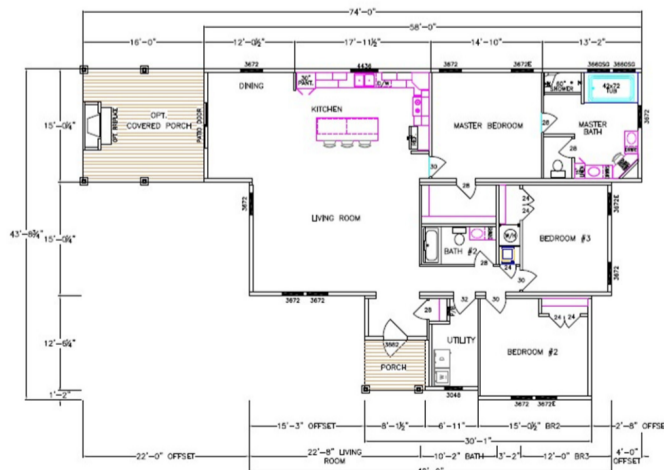
SQ. FT.	2227
BEDROOMS:	3
BATHROOMS:	2
LEVELS:	1

OPTIONAL FEATURES

- Green Certification
- Energy Star

The Nandina I is a masterpiece of residential design that combines modern aesthetics with unmatched functionality. This elegant home features 3 spacious bedrooms, 2 luxurious bathrooms, and an ample 2227 square feet of living space, perfect for both lively social gatherings and serene personal retreats. Designed with precision, each area of the Nandina I is tailored to enhance the everyday experience, offering seamless transitions from bustling communal areas to peaceful private spaces. Whether hosting a festive occasion or enjoying a quiet evening, this home adapts to your lifestyle effortlessly. Embrace a higher standard of living in the Nandina I, where every detail reflects quality and sophistication.

FIRST FLOOR



YOUR
NEW HOME
CONSULTANT



Hi, I'm , your personal Modular Home Consultant

I would be happy to help you with any questions you may have. You can contact me on my direct number at or email me at .

