

LAURELWOOD II. CCL-002

Traditional



SPECIFICATIONS

SQ. FT.	1652
BEDROOMS:	3
BATHROOMS:	2
LEVELS:	1

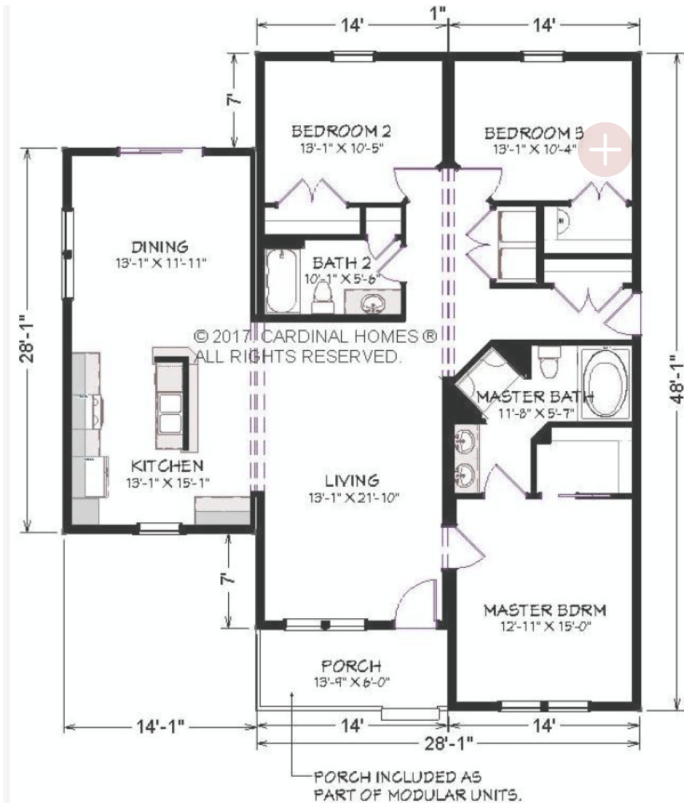
OPTIONAL FEATURES

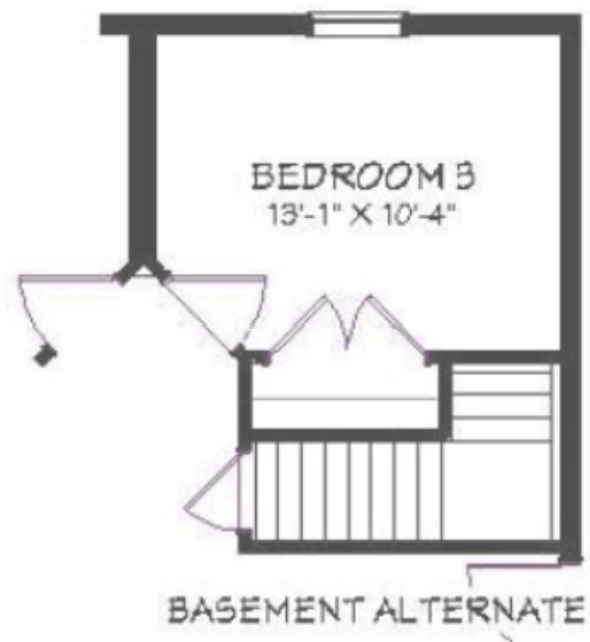
- ☒ Green Certification
- ☒ Energy Star

The Laurelwood II offers a versatile and spacious design ideal for those seeking a blend of modern living and traditional comfort. With 1,652 square feet of living space, this ranch-style home features three bedrooms and two bathrooms, providing ample room for families of all sizes.

The heart of the home is the open-concept main living area, where the kitchen, dining, and great room flow together effortlessly. The kitchen is equipped with a large island, perfect for preparing meals and casual dining, while the adjacent dining area can accommodate larger gatherings.

The master suite provides convenience and privacy, complete with a walk-in closet and an en-suite bathroom. The covered front porch adds curb appeal, welcoming guests and providing a cozy spot to relax. Overall, the Laurelwood II combines functionality, style, and comfort, making it an ideal family home.





YOUR
NEW HOME
CONSULTANT

Hi, I'm , your personal Modular Home Consultant

I would be happy to help you with any questions you may have. You can contact me on my direct number at or email me at .