



SPECIFICATIONS

SQ. FT.	1920
BEDROOMS:	3
BATHROOMS:	2.0
LEVELS:	1.0

OPTIONAL FEATURES

- Green Certification
- Energy Star

The LaGrange is a modern and spacious modular house plan that offers a total living area of 1920square feet. This stunning home features three bedrooms, two bathrooms, and an open living area that encompasses the kitchen, dining, and living room.

As you enter the home, you are greeted by a spacious and bright living room that flows seamlessly into the dining and kitchen areas. The kitchen is equipped with modern appliances, a large center island, and ample counter space, making it perfect for cooking and entertaining. The dining area is conveniently located adjacent to the kitchen, providing a comfortable space to enjoy meals with family and friends.

The master bedroom is located on one side of the home and features a large walk-in closet and an ensuite bathroom with dual sinks, a shower, and a bathtub. The other two bedrooms are located on the opposite side of the home, offering privacy and comfort for the homeowners and their guests. The second bathroom is conveniently located between the bedrooms and features a bathtub and shower.

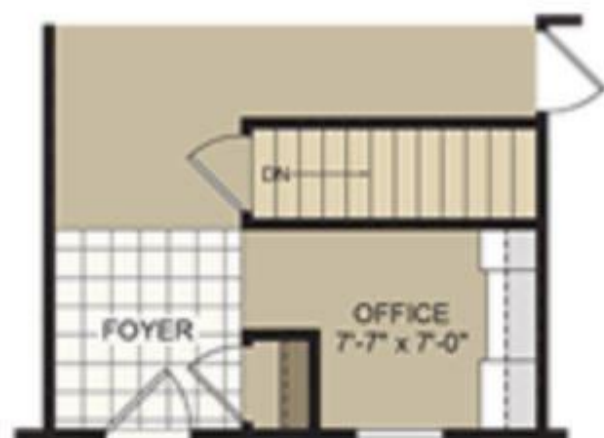
The LaGrange also features a laundry room, providing a convenient space to take care of household chores. Additionally, there is a covered porch that offers the perfect place to relax and enjoy the outdoors.

Overall, the LaGrange is a beautiful and functional home that is perfect for families or individuals looking for a modern and comfortable living space with all the amenities they need for comfortable living.

FIRST FLOOR



OPTIONAL BASEMENT



YOUR
NEW HOME
CONSULTANT



Hi, I'm , your personal Modular Home Consultant

I would be happy to help you with any questions you may have. You can contact me on my direct number at or email me at .

