

GOSHEN. CBC-4201

Traditional



SPECIFICATIONS

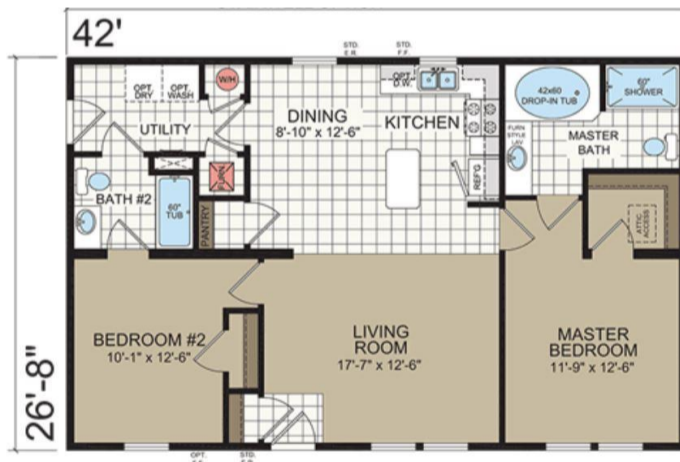
SQ. FT.	1120
BEDROOMS:	2
BATHROOMS:	2
LEVELS:	1.0

OPTIONAL FEATURES

- Green Certification
- Energy Star

The Goshen with its gable roof and covered porch (on site by others) is sure to give you the Welcome Home feeling. When you enter this home you will get the feeling that it is much larger than it is because of the open floor plan. The master bedroom and bath are set apart from the second bedroom for the owner's privacy. The kitchen has an optional island for prepping food or having dinner buffet style.

FIRST FLOOR



OPTIONAL SERENITY SHOWER



YOUR
NEW HOME
CONSULTANT



Hi, I'm Chris Runyan, your personal Modular Home Consultant

I would be happy to help you with any questions you may have. You can contact me on my direct number at **(877) 419-9858** or email me at chris.runyan@impresamodular.com.