

FRIAR BAY . EKO-026

Cabin Chalet Cottage Traditional



SPECIFICATIONS

SQ. FT.	2264
BEDROOMS:	3
BATHROOMS:	2.0
LEVELS:	1.5

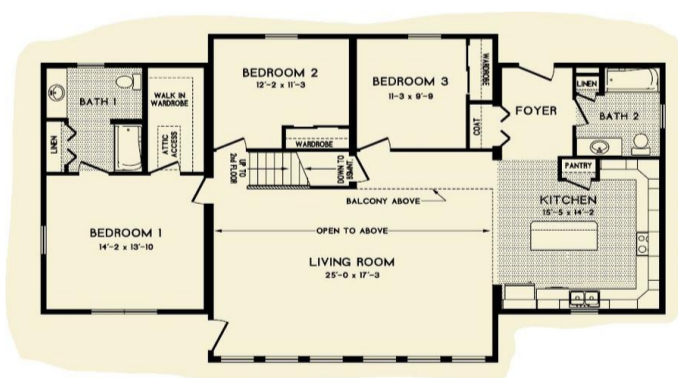
OPTIONAL FEATURES

- Green Certification
- Energy Star

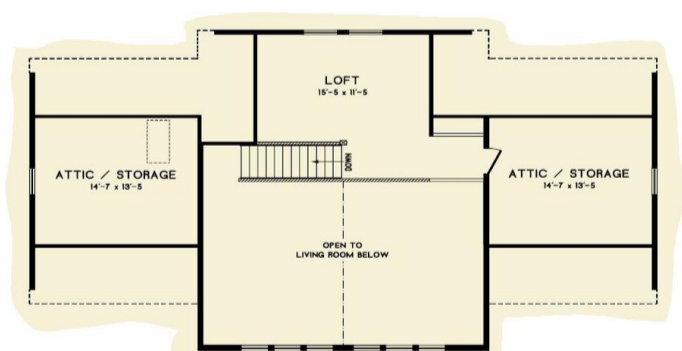
This 1,664 square foot Chalet's first floor has 3 bedrooms and 2 baths. The 600 square foot optional second floor has a large loft area and two storage areas, one is accessible from the balcony and the other is accessible from the master bedroom suite. The trapezoid windows coupled with the multiple windows at the living room level allows the natural light to penetrate into the home. The large kitchen has a built-in pantry as well as an island. The master bedroom has a large walk-in wardrobe and a master bath.

Note: Cape Models come with an unfinished 2nd floor that can be completed on site. Listed square footage, bedrooms and baths include 2nd story living.

FIRST FLOOR



PROPOSED SECOND FLOOR



YOUR
NEW HOME
CONSULTANT



Hi, I'm , your personal Modular Home Consultant

I would be happy to help you with any questions you may have. You can contact me on my direct number at or email me at .

