

# JAMESTOWN V. EKO-012

ContemporaryTraditional



## SPECIFICATIONS

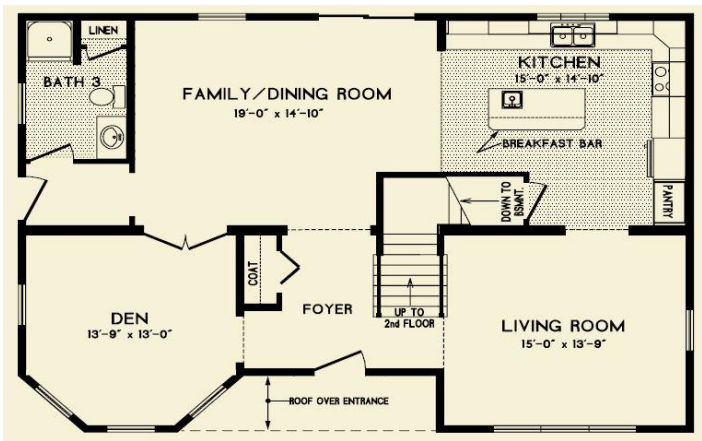
SQ. FT.	2392
BEDROOMS:	3
BATHROOMS:	3.0
LEVELS:	2.0

## OPTIONAL FEATURES

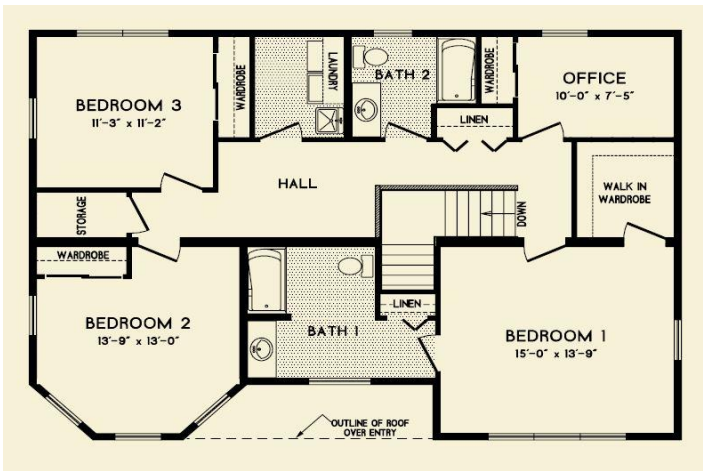
- ☒ Green Certification

2,392 square foot Colonial with three bedrooms and two and three quarter baths. This home has a large living room, private den and a spacious family / dining room. The large kitchen area has 6' island cabinets with a veggie sink and breakfast bar. The second floor master bedroom has a master bath and walk-in wardrobe. The laundry facilities are conveniently located on the second floor close to the bedrooms.

### FIRST FLOOR



### SECOND FLOOR



YOUR  
NEW HOME  
CONSULTANT

Hi, I'm , your personal Modular Home Consultant

I would be happy to help you with any questions you may have. You can contact me on my direct number at or email me at .