

PORTLAND I. EKO-006

Traditional



SPECIFICATIONS

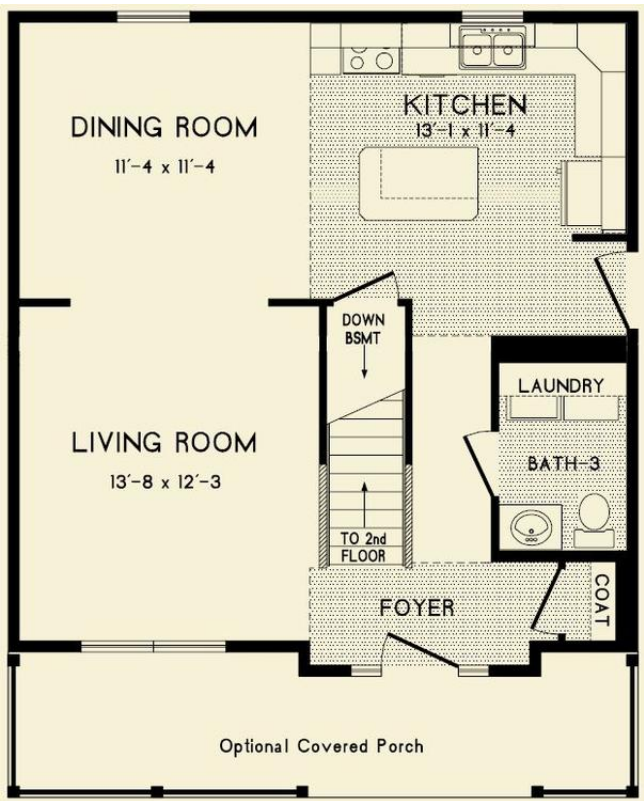
| | |
|------------|------|
| SQ. FT. | 1400 |
| BEDROOMS: | 3 |
| BATHROOMS: | 2.5 |
| LEVELS: | 2.0 |

OPTIONAL FEATURES

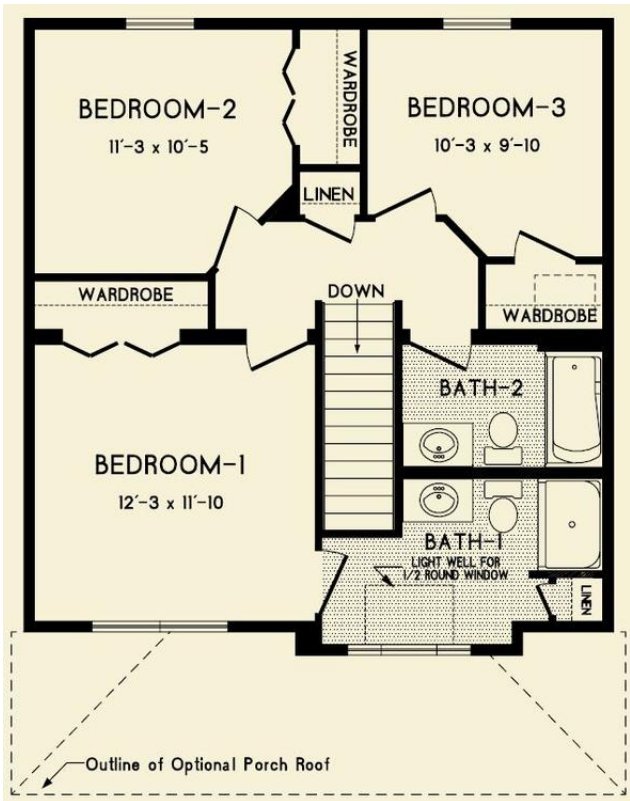
- ☒ Green Certification
- ☒ Energy Star

1,400 square foot Colonial with three bedrooms and two and a half baths. The two-story bump out with reverse gable creates a beautiful look on this value sized home. The master bedroom has its own bath. The laundry facilities are conveniently located on the first floor. Suitable for small city lots or expand with a breezeway and garage.

FIRST FLOOR



SECOND FLOOR



YOUR
NEW HOME
CONSULTANT

Hi, I'm , your personal Modular Home Consultant

I would be happy to help you with any questions you may have. You can contact me on my direct number at or email me at .