

MEADOW VALLEY. SHT-029

Traditional



SPECIFICATIONS

SQ. FT.	2740
BEDROOMS:	5
BATHROOMS:	3.0
LEVELS:	2.0

OPTIONAL FEATURES

- ☒ Green Certification
- ☒ Energy Star

The Meadow Valley home plan is a beautiful and spacious two-story house with a traditional design. The exterior of the home features clean lines, and large windows that provide ample natural light to the interior. The entrance of the home leads to a foyer that opens up to the main living area, which includes a spacious living room with an optional fireplace, a breakfast area, and a modern kitchen with a large island and plenty of counter space.

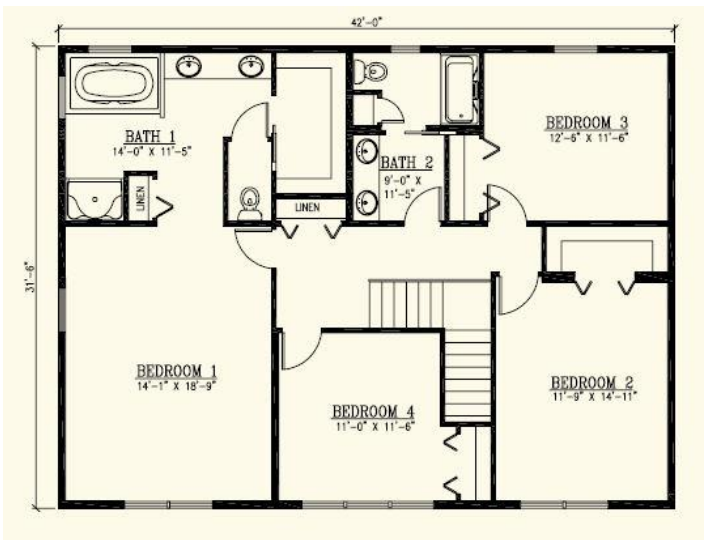
The Meadow Valley plan includes 4-5 bedrooms, each with its own walk-in closet. Bedrooms are located on the second level of the home. The master bedroom includes a large window that allows natural light into the room, while the master bathroom features dual sinks, a large soaking tub, with shower, and a private toilet room. The other three other bedrooms share a bathroom. Additionally, the home has a two-car garage with ample storage space.

Overall, the Meadow Valley home plan offers a well-designed and functional living space with plenty of modern amenities and beautiful details.

FIRST FLOOR



SECOND FLOOR



YOUR
NEW HOME
CONSULTANT



Hi, I'm Justin Bryant, your personal modular home consultant

I would be happy to help you with any questions you may have. You can contact me on my direct number at **(877) 410-6334** or email me at justin.bryant@impresamodular.com.