

DOUGLAS. SHT-024

Traditional



SPECIFICATIONS

SQ. FT.	2260
BEDROOMS:	3
BATHROOMS:	2.5
LEVELS:	2.0

OPTIONAL FEATURES

- ☒ Green Certification
- ☒ Energy Star

The Douglas is a stunning home plan that offers a spacious and functional living space with a total living area of 2,260 square feet. This home features three bedrooms, two and a half bathrooms, and an open-concept living area that includes the kitchen and living room.

As you enter the Douglas, you are welcomed by a spacious living room that leads into the kitchen. The kitchen features modern appliances, a large center island, and plenty of counter space, making it perfect for cooking and entertaining.

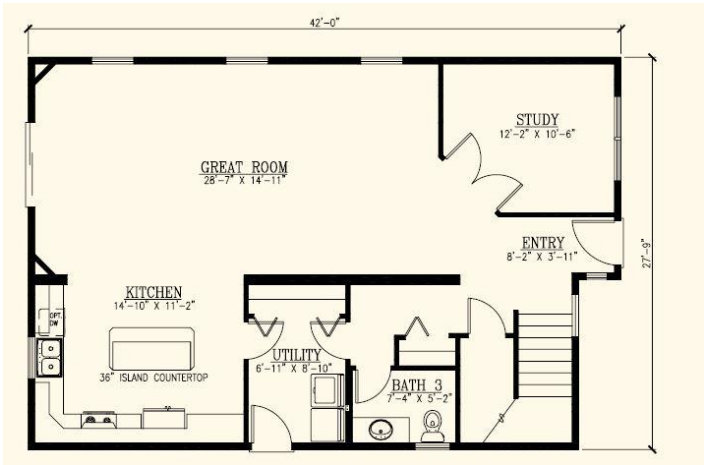
The main level features a 1/2 bath and a dedicated laundry room. In addition, there is a study, guest room, media room or what your needs are.

All the bedrooms are located on the second level of the home. The master suite includes a large walk-in closet and an ensuite bathroom with dual sinks, a bathtub, and a separate shower.

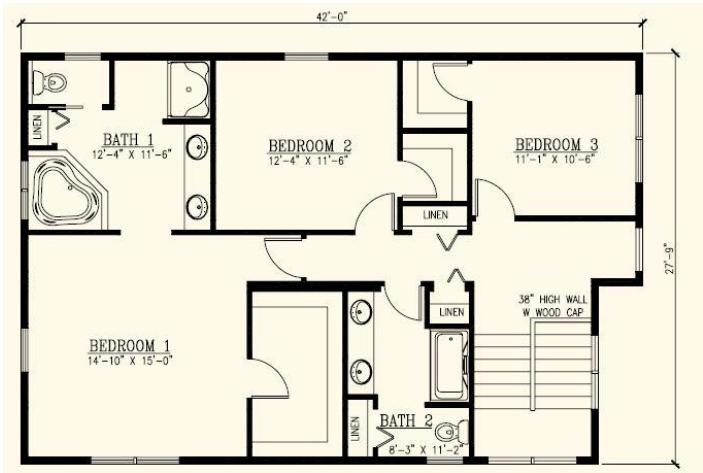
The other two bedrooms are conveniently located across from the master and share a bathroom with double sinks and a tub and shower combination.

There is a spacious covered porch that offers the perfect place to relax and enjoy the outdoors.

FIRST FLOOR



SECOND FLOOR



YOUR

Hi, I'm , your personal Modular Home Consultant

I would be happy to help you with any questions you may have. You can contact me on my direct number at or email me at .