

BERWICK. SHR-005

Traditional



SPECIFICATIONS

SQ. FT.	1352
BEDROOMS:	3
BATHROOMS:	2.0
LEVELS:	1.0

OPTIONAL FEATURES

- ☒ Green Certification
- ☒ Energy Star

The Berwick home plan offers a modern, open-concept living space that is perfect for families or those who enjoy entertaining guests. The exterior features a stylish combination of stone and siding, with a welcoming front porch.

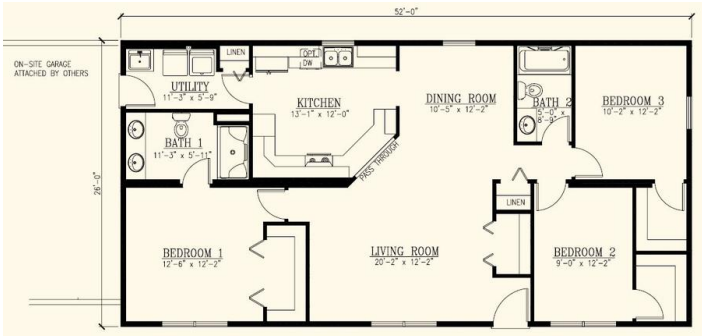
The spacious living room, with plenty of natural light has room for large gatherings. The adjacent kitchen boasts a large island and ample counter space, making meal preparation and entertaining a breeze. The dining area is conveniently located next to the kitchen.

The primary bedroom suite is located on the on one side of the home and features a luxurious ensuite bathroom with a large shower and dual vanities. Two additional bedrooms are located on the opposite side, along with a full bathroom.

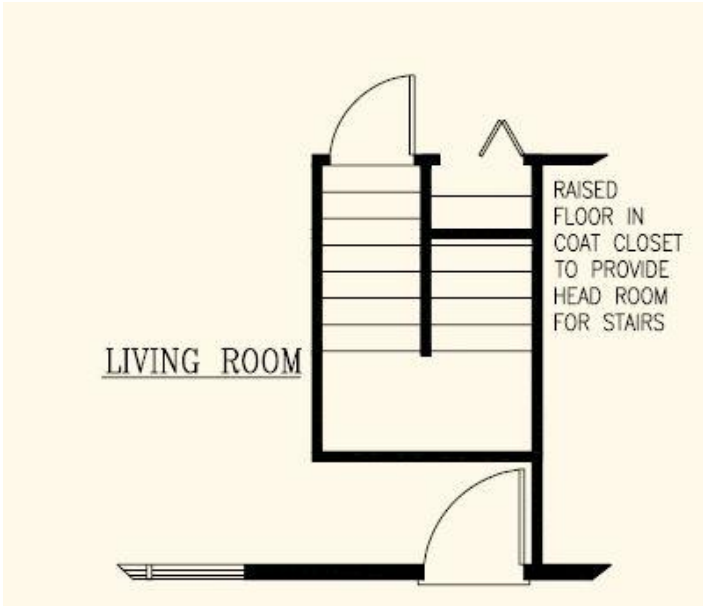
The Berwick home plan also includes a two-car garage, laundry room, and plenty of storage throughout. With its modern design and spacious living areas, this home is perfect for those who value comfort and style.

Artist's rendering may contain optional items.

FIRST FLOOR



OPTIONAL BASEMENT STAIR LOCATION



YOUR
NEW HOME
CONSULTANT



Hi, I'm Chris Runyan, your personal Modular Home Consultant

I would be happy to help you with any questions you may have. You can contact me on my direct number at **(877) 419-9858** or email me at **chris.runyan@impresamodular.com**.