

PRIVATE: ASHLEY CAPE. PHO-020

Traditional



SPECIFICATIONS

SQ. FT.	2520
BEDROOMS:	3
BATHROOMS:	2.0
LEVELS:	1.5

OPTIONAL FEATURES

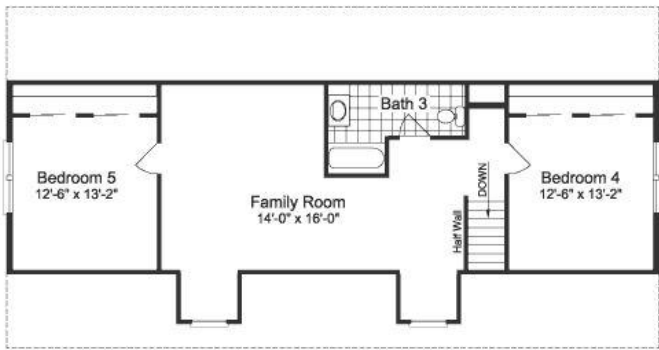
- ☒ Green Certification
- ☒ Energy Star

The Ashley Cape is a stunning one and a half-story home. This home features a classic Cape Cod style with a charming covered porch, and a pitched roof. The first floor includes a spacious living area with an optional fireplace, a dining area, and a modern kitchen with a bar and pantry. The first floor also includes a master suite with a walk-in closet and a luxurious bathroom. The two additional bedrooms, and a full bathroom are located on the other side of the home. The second floor area can be used as a home office, play area, Family room, 2 more bedrooms and a third bathroom. the possibilities are endless. The Ashley Cape also has ample storage throughout the home. With its classic charm and modern amenities, the Ashley Cape is a perfect home for families of all sizes.

FIRST FLOOR



PROPOSED SECOND FLOOR



YOUR
NEW HOME
CONSULTANT



Hi, I'm Justin Bryant, your personal Modular Home Consultant

I would be happy to help you with any questions you may have. You can contact me on my direct number at **(877) 410-6334** or email me at justin.bryant@impresamodular.com.