

# PRIVATE: LA LINDA. PHO-018

Traditional



### SPECIFICATIONS

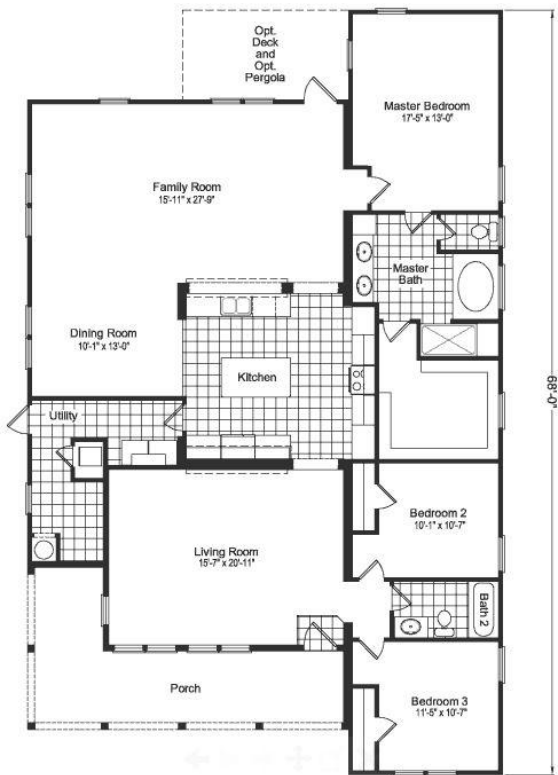
SQ. FT.	2280
BEDROOMS:	3
BATHROOMS:	2.0
LEVELS:	1.0

### OPTIONAL FEATURES

- ☒ Green Certification
- ☒ Energy Star

The La Linda DCHO is a modern and spacious modular home. This home features 3 bedrooms, 2 bathrooms, and a large open living area. The exterior of the La Linda DCHO is designed to blend into any landscape with its clean lines and simple design. Inside, the home is bright and airy, with large windows and high ceilings. The main living area includes a kitchen, dining room, family room, and living room, which all flow together seamlessly. The bedrooms are spacious and provide plenty of room for relaxation and rest. The La Linda is a great choice for families or anyone looking for a modern and functional home design.

### FIRST FLOOR





Hi, I'm , your personal Modular Home Consultant

I would be happy to help you with any questions you may have. You can contact me on my direct number at or email me at .