

SPOKANE. TLC-008

Traditional



SPECIFICATIONS

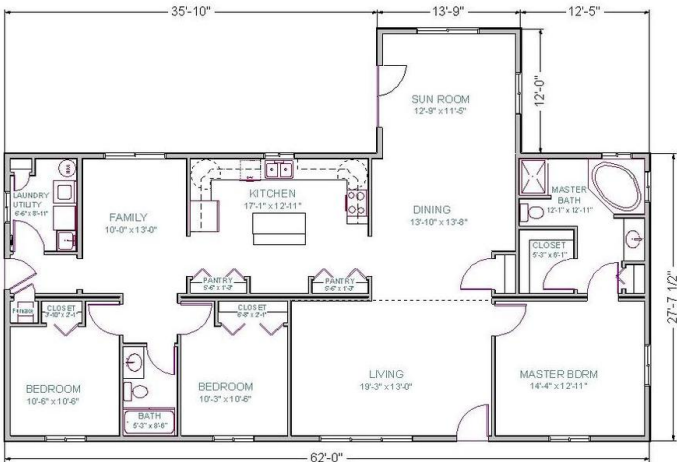
SQ. FT.	1904
BEDROOMS:	2
BATHROOMS:	2.0
LEVELS:	1.0

OPTIONAL FEATURES

- ☒ Green Certification
- ☒ Energy Star

At 1,904 square feet, the Spokane plans includes three bedrooms and two bathrooms. The master suite features a bathroom with garden tub and a nice sized walk in closet. A sun room off the dining room adds extra space for entertaining. This plan can be customized to suit your needs.

FIRST FLOOR



YOUR
NEW HOME
CONSULTANT



Hi, I'm Justin Bryant, your personal Modular Home Consultant

I would be happy to help you with any questions you may have. You can contact me on my direct number at **(877) 410-6334** or email me at justin.bryant@impresamodular.com.