

WATERVILLE. HCV-001

Traditional



SPECIFICATIONS

SQ. FT.	1628
BEDROOMS:	3
BATHROOMS:	2.0
LEVELS:	1.5

OPTIONAL FEATURES

- ☒ Green Certification
- ☒ Energy Star

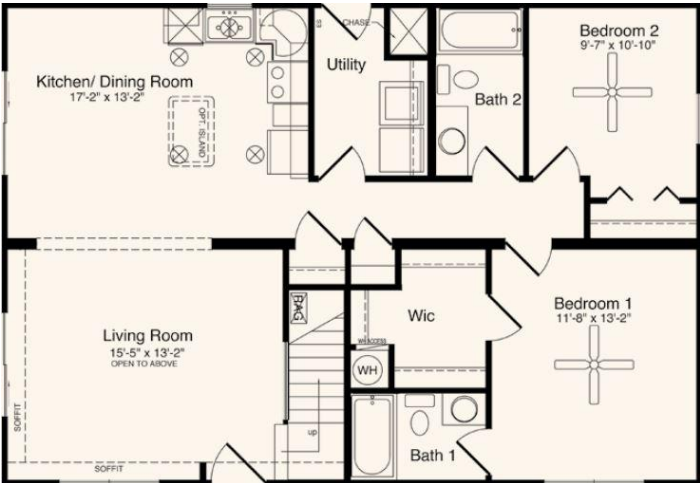
The Waterville is a stunning house plan designed for luxurious and comfortable living. The home has a total living area of 1628 square feet and features 3 bedrooms, 2 bathrooms, and an open living area that encompasses the kitchen, dining, and living room.

As you enter the home, you are greeted by a living room, which features a beautiful windows that allow plenty of natural light. The open-concept design allows for easy flow between the living room, dining area, and kitchen. The kitchen is equipped with modern appliances, an optional large center island, and ample counter space, making it perfect for cooking and entertaining.

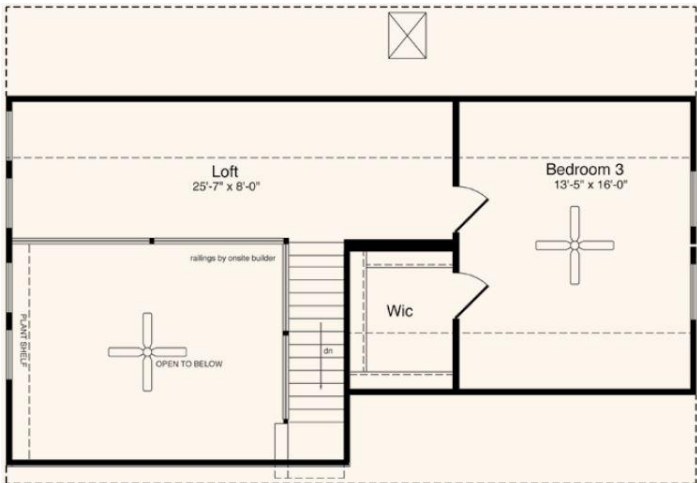
The master and bedroom #2 are located on the main level of the home and features a large walk-in closet and an ensuite bathroom with a shower and tub combination. The other bedroom is located on the upper level of the home, offering privacy and comfort.

The Waterville also features a laundry room on the main level, providing a convenient space to take care of household chores. Additionally, there is a spacious covered porch that offers the perfect place to relax and enjoy the outdoors.

FIRST FLOOR



SECOND FLOOR



YOUR
NEW HOME
CONSULTANT



Hi, I'm Butch Mullinix, your personal Modular Home Consultant

I would be happy to help you with any questions you may have. You can contact me on my direct number at **(877) 410-6966** or email me at butch.mullinix@impresamodular.com.