

CRESTVIEW I . AHR-091

Traditional



SPECIFICATIONS

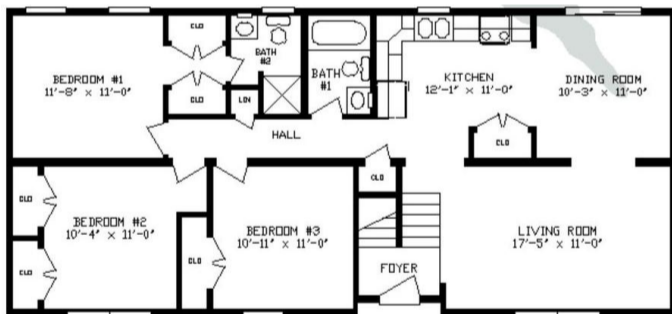
SQ. FT.	1230
BEDROOMS:	3
BATHROOMS:	2.0
LEVELS:	1.0

OPTIONAL FEATURES

- Green Certification
 - Energy Star
 - Garage
- Included

The success of this split foyer home is in the utilization of the lower. The raised foundation provides options for convenient garage space as well as door and window packages necessary for additional living space in the lower level. The exterior of this home can be finished with either a flush front or the traditional cantilever. This home can be made available with Anderson Windows.

FIRST FLOOR



YOUR
NEW HOME
CONSULTANT



Hi, I'm , your personal Modular Home Consultant

I would be happy to help you with any questions you may have. You can contact me on my direct number at or email me at .

