

MONTICELLO I. AHT-056

Traditional



SPECIFICATIONS

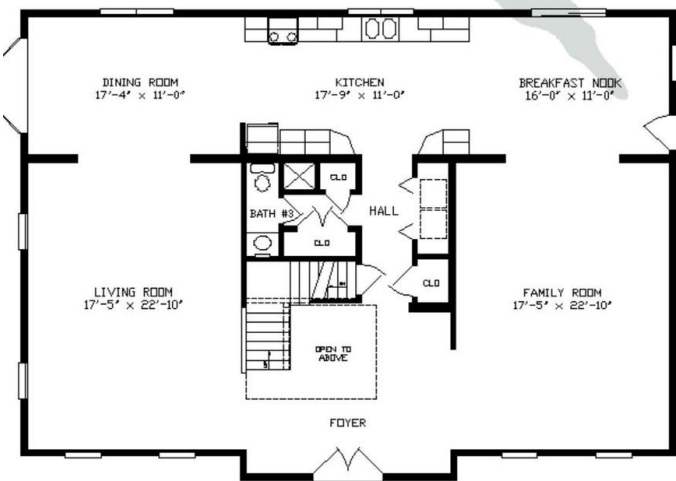
SQ. FT.	3744
BEDROOMS:	4
BATHROOMS:	2.5
LEVELS:	2.0

OPTIONAL FEATURES

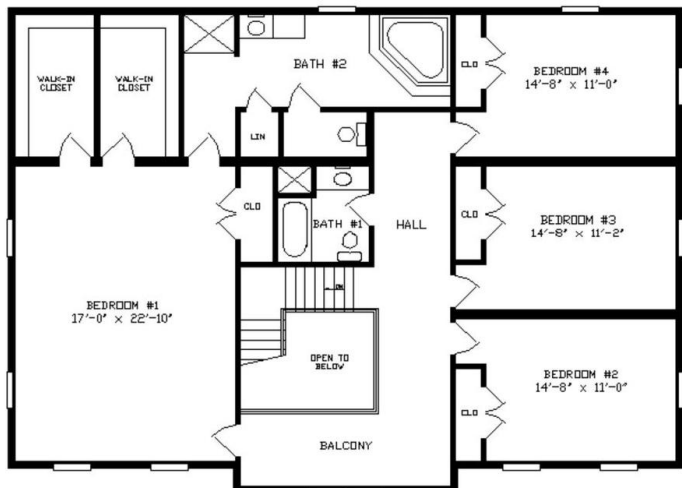
- ☒ Green Certification
- ☒ Energy Star

Walking into the foyer of the Monticello you will see just how lavish this home is. Preparing and serving meals will be a breeze in this galley kitchen with adjoining breakfast nook and dining room. Second floor boast a large master bedroom with his and hers walk in closet and master bath with a toilet closet and garden tub for your end of day relaxing.

FIRST FLOOR



SECOND FLOOR



YOUR
NEW HOME
CONSULTANT



Hi, I'm Justin Bryant, your personal Modular Home Consultant

I would be happy to help you with any questions you may have. You can contact me on my direct number at **(877) 410-6334** or email me at justin.bryant@impresamodular.com.