

# ASHLEY. AHT-035

Traditional



## SPECIFICATIONS

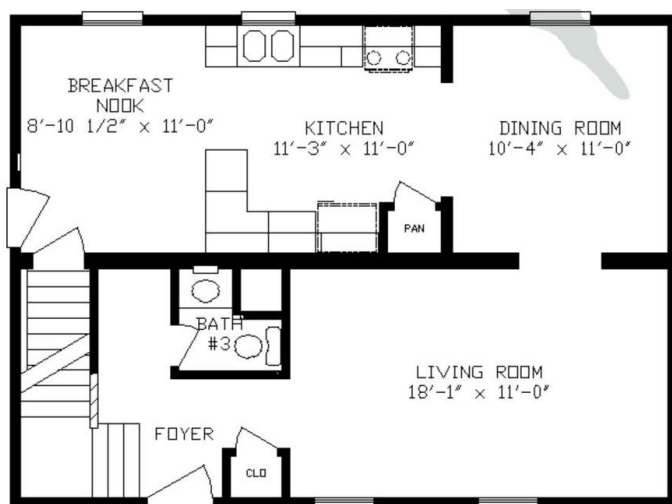
SQ. FT.	1514
BEDROOMS:	3
BATHROOMS:	2.5
LEVELS:	2.0

## OPTIONAL FEATURES

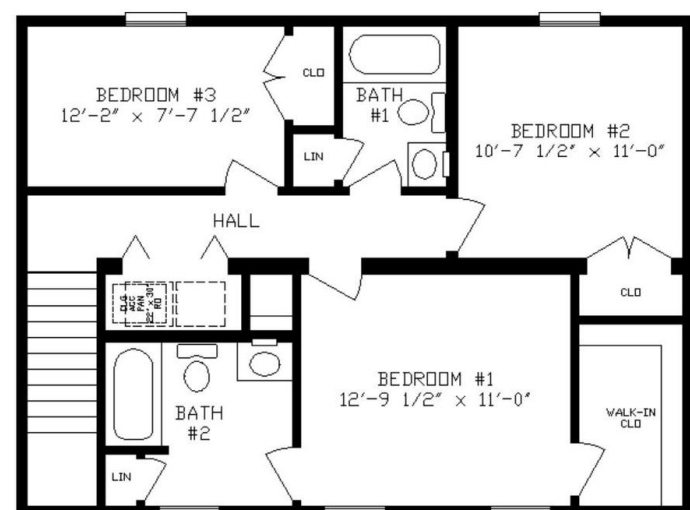
- ☒ Green Certification
- ☒ Energy Star

This two story three bedroom, two and a half bath home is perfect for the small family. The kitchen is open to both the breakfast nook and dining room. The master bedroom has a large walk in closet and the master bathroom has a linen closet. The hall bath has a linen closet in it as well. Washer and dryer are upstairs for you convenience.

### FIRST FLOOR



### SECOND FLOOR



YOUR  
NEW HOME  
CONSULTANT



Hi, I'm Sara Griffin, your personal Modular Home Consultant

I would be happy to help you with any questions you may have. You can contact me on my direct number at **615-485-8878** or email me at [sara.griffin@impresamodular.com](mailto:sara.griffin@impresamodular.com).