

CAPE CAROLINA I . AHC-003

Traditional



SPECIFICATIONS

SQ. FT.	1041
BEDROOMS:	1
BATHROOMS:	1.0
LEVELS:	1.5

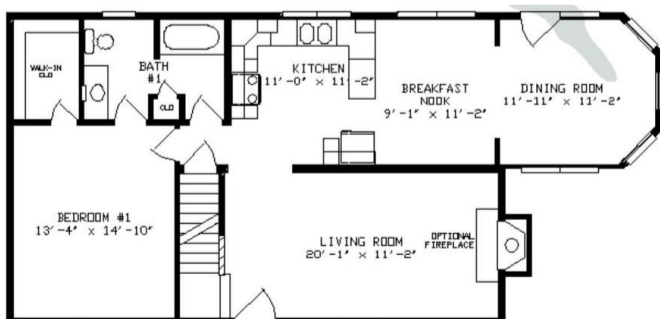
OPTIONAL FEATURES

- Green Certification
- Energy Star

This charming country cape has a very livable floor plan. Dressed with optional dormers, a sunny breakfast nook and a lovely large optional front porch, this home invites you to truly enjoy country living, wherever you build.

NOTE: Cape Cod Homes presented on this website may describe proposed second floors that are not included in the estimated base price. This is due to the fact that they are to be completed onsite by others. You must contact your Modular Home Consultant to determine if the proposed second floor displayed is included in the estimated base price or may be available at an additional charge. You should assume that the second floor is unfinished and not included in the base price unless it is specifically stated, or your Modular Home Consultant confirms that it is included.

FIRST FLOOR



YOUR
NEW HOME
CONSULTANT



Hi, I'm , your personal Modular Home Consultant

I would be happy to help you with any questions you may have. You can contact me on my direct number at or email me at .

