



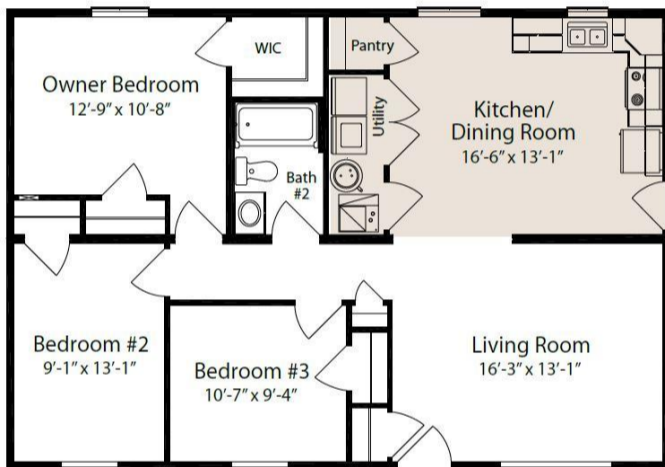
SPECIFICATIONS

| | |
|------------|------|
| SQ. FT. | 1105 |
| BEDROOMS: | 3 |
| BATHROOMS: | 1.0 |
| LEVELS: | 1.0 |

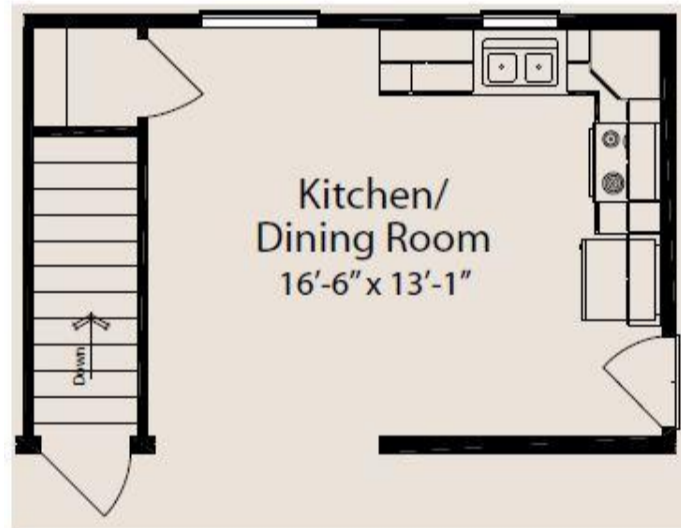
OPTIONAL FEATURES

- Green Certification
- Energy Star

FIRST FLOOR



BASEMENT OPTION



YOUR
NEW HOME
CONSULTANT



Hi, I'm David Lippa, your personal Modular Home Consultant

I would be happy to help you with any questions you may have. You can contact me on my direct number at **(877) 419-1478** or email me at David.Lippa@impresamodular.com.

