

EXPRESSION – RANCH. SLC-010

Traditional



SPECIFICATIONS

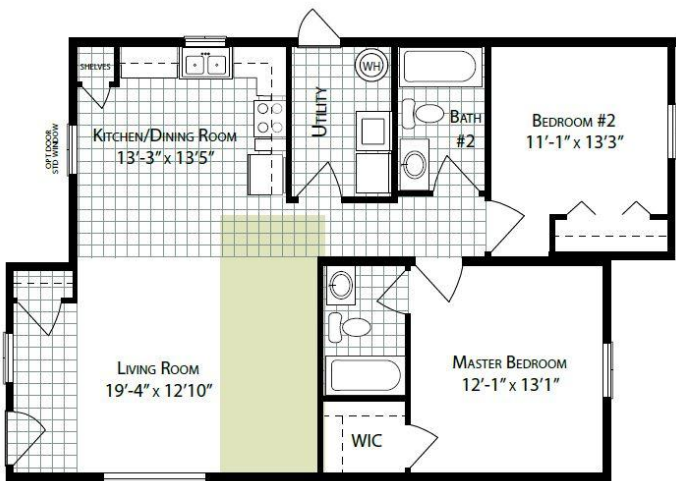
SQ. FT.	1056
BEDROOMS:	2
BATHROOMS:	2.0
LEVELS:	1.0

OPTIONAL FEATURES

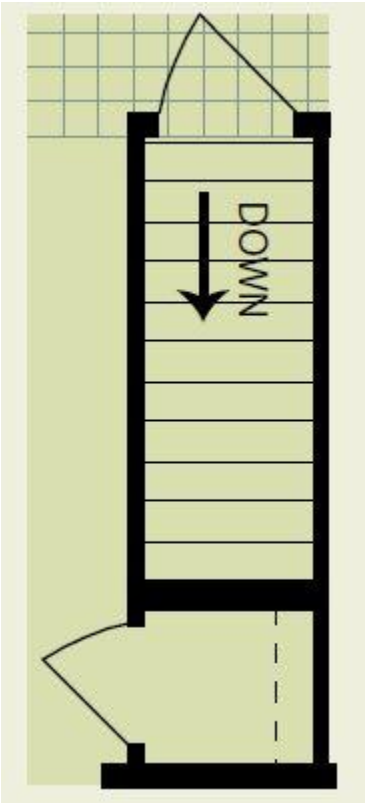
- ☒ Green Certification
- ☒ Energy Star

This Craftsman's Style home has great curb appeal with it's covered porch , transoms and gabled roof. Supremely efficient and comfortable, the floor plan links the kitchen, dining area, and living room.

FIRST FLOOR



BASEMENT OPTION



YOUR
NEW HOME
CONSULTANT



Hi, I'm David Lipka, your personal Modular Home Consultant

I would be happy to help you with any questions you may have. You can contact me on my direct number at **(877) 419-1478** or email me at David.Lipka@impresamodular.com.