

# PRIDE – CAPE. SLC-007

Traditional



## SPECIFICATIONS

SQ. FT.	1406
BEDROOMS:	3
BATHROOMS:	2.5
LEVELS:	1.5

## OPTIONAL FEATURES

- ☒ Green Certification
- ☒ Energy Star

The Pride Cape home plan is a charming and cozy one and a half-story house with a classic design that would be perfect for a small family or empty nesters. With a total living space of 1,406 square feet, this home features three bedrooms and two and a half bathrooms.

Upon entering the home, you'll find a spacious living room that leads into an open-concept kitchen and dining area. The kitchen is well-appointed with modern appliances and ample counter space, making it perfect for cooking and entertaining. The dining area includes a door that leads to a rear patio, providing plenty of opportunities to enjoy the outdoors.

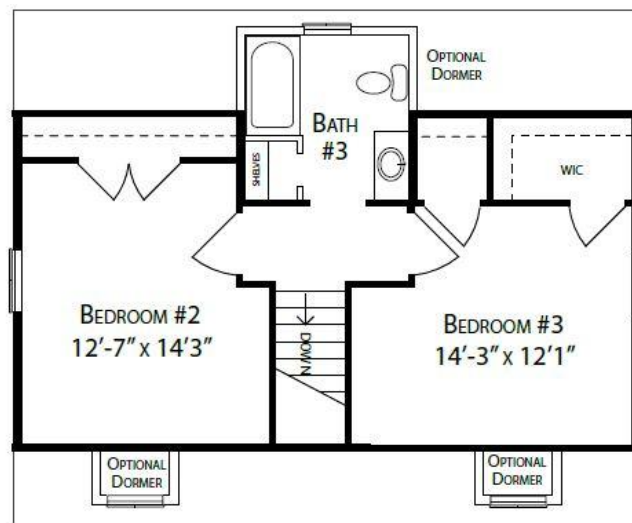
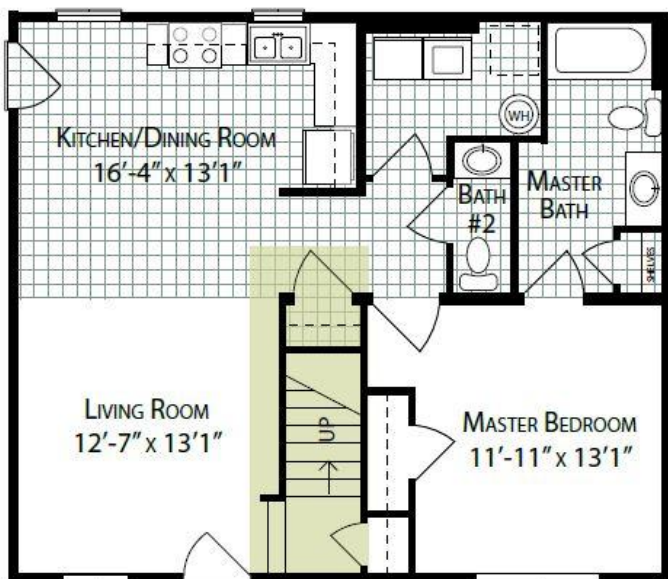
The master suite is situated on the main floor of the home, providing privacy and a peaceful retreat. It includes a large bedroom, a walk-in closet, and an ensuite bathroom with a tub and shower combination. There is also a half bath and a laundry room.

The 2 remaining bedrooms are located on the second level of the home, along with a shared full bathroom. Additional features of the Pride Cape home plan include a covered front porch that provides a welcoming entrance, and a two-car garage that offers ample space for parking and storage.

Overall, the Pride Cape home plan offers a cozy and classic design that would be perfect for a small family or empty nesters looking for a comfortable and stylish home.

### FIRST FLOOR

### SUGGESTED SECOND FLOOR



YOUR  
NEW HOME  
CONSULTANT



**Hi, I'm Chris Runyan, your personal Modular Home Consultant**

I would be happy to help you with any questions you may have. You can contact me on my direct number at **(877) 419-9858** or email me at [chris.runyan@impresamodular.com](mailto:chris.runyan@impresamodular.com).