

# IMAGINE – CAPE. SLC-005

Traditional



### SPECIFICATIONS

SQ. FT.	1608
BEDROOMS:	4
BATHROOMS:	2.0
LEVELS:	1.5

### OPTIONAL FEATURES

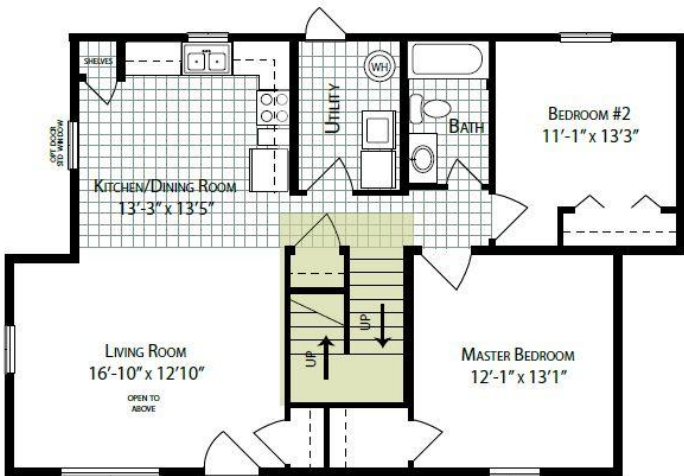
- ☒ Green Certification
- ☒ Energy Star

The Imagine Cape is a stylish and practical home plan. This one and a half-story home boasts 1,608 square feet of living space, with four bedrooms and two bathrooms. The open-concept living area features a large kitchen and dining room combination. The spacious living room is perfect for entertaining guests or spending time with family.

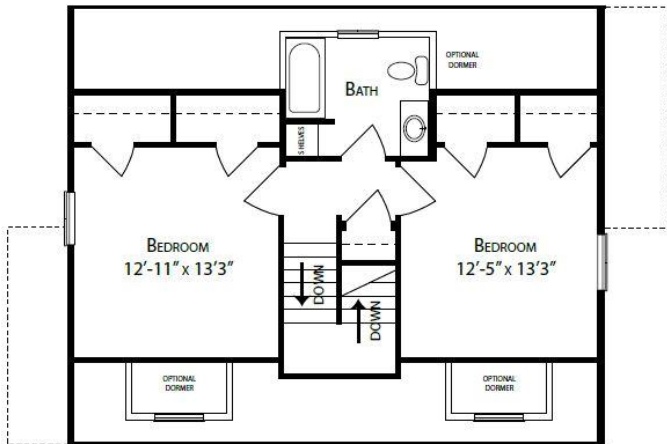
The master suite and bedroom # 2 are located on the first floor and share the main level bathroom. They feature a large walk-in closet. Bedrooms 3 and 4 are located on the second level and share a bathroom. In addition, the Imagine Cape also includes a laundry room, providing a convenient space to take care of household chores.

This home's exterior features a charming front porch, making it perfect for relaxing and enjoying the outdoors. The Imagine Cape is a beautiful and functional home that provides everything you need to live comfortably and in style.

### FIRST FLOOR



### SUGGESTED SECOND FLOOR



YOUR  
NEW HOME  
CONSULTANT

Hi, I'm , your personal Modular Home Consultant

I would be happy to help you with any questions you may have. You can contact me on my direct number at or email me at .

