

THE CREEDMORE. HCC-034

Traditional



SPECIFICATIONS

SQ. FT.	2300
BEDROOMS:	4
BATHROOMS:	3.0
LEVELS:	1.5

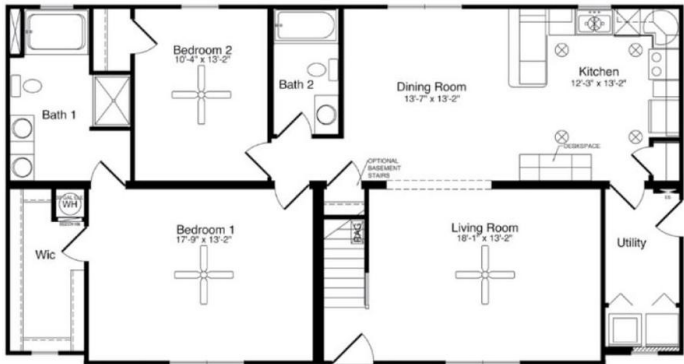
OPTIONAL FEATURES

- ☒ Green Certification
- ☒ Energy Star

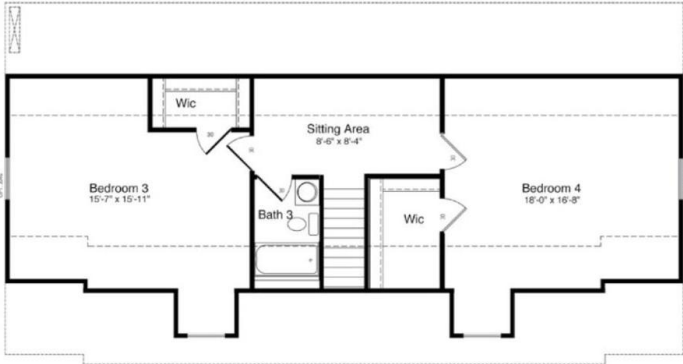
A thing of beauty — that’s The Creedmore. Its optional three-dormer design and stunning front porch, built on-site, give this home exceptional curb appeal. The first floor features two bedrooms, two baths, living room, dining room and kitchen. The suggested second floor provides the third bath and two additional bedrooms.

Note: Cape Models come with an unfinished 2nd floor that can be completed on site. Listed square footage, bedrooms and baths include 2nd story living.

FIRST FLOOR



SECOND FLOOR



YOUR
NEW HOME
CONSULTANT



Hi, I'm Justin Bryant, your personal Modular Home Consultant

I would be happy to help you with any questions you may have. You can contact me on my direct number at **(877) 410-6334** or email me at justin.bryant@impresamodular.com.