

THE LOWESVILLE . HCR-025

Traditional



SPECIFICATIONS

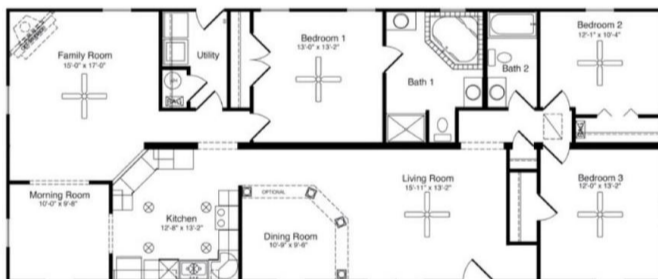
SQ. FT.	1826
BEDROOMS:	3
BATHROOMS:	2.0
LEVELS:	1.0

OPTIONAL FEATURES

- Green Certification
- Energy Star

This charming ranch will be the talk of your neighborhood. This home has tremendous curb appeal and an inviting floorplan. With three bedrooms and two full baths, a unique living/dining room combo and kitchen designed with convenience in mind, this home is built around you. The morning room and family room complete this remarkable home.

FIRST FLOOR



YOUR
NEW HOME
CONSULTANT



Hi, I'm , your personal Modular Home Consultant

I would be happy to help you with any questions you may have. You can contact me on my direct number at or email me at .

