

# THE CHERRYVILLE. HCR-019

Traditional



### SPECIFICATIONS

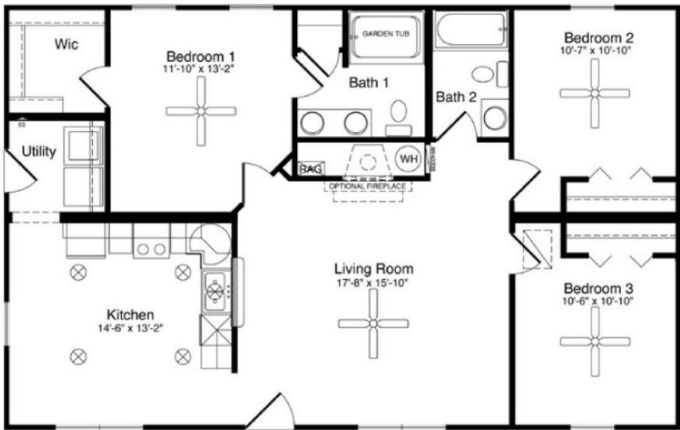
SQ. FT.	1217
BEDROOMS:	3
BATHROOMS:	2.0
LEVELS:	1.0

### OPTIONAL FEATURES

- ☒ Green Certification
- ☒ Energy Star

The Cherryville features a master suite with walk-in closet and master bath. Two additional bedrooms and a full bath complete the sleeping quarters of the home. A large living room, beautiful kitchen and separate utility room encompass the remainder of the home.

### FIRST FLOOR



YOUR  
NEW HOME  
CONSULTANT



Hi, I'm Justin Bryant, your personal Modular Home Consultant

I would be happy to help you with any questions you may have. You can contact me on my direct number at **(877) 410-6334** or email me at [justin.bryant@impresamodular.com](mailto:justin.bryant@impresamodular.com).