

# THE SALISBURY. HCT-008

Traditional



### SPECIFICATIONS

SQ. FT.	3292
BEDROOMS:	4
BATHROOMS:	3.5
LEVELS:	2.0

### OPTIONAL FEATURES

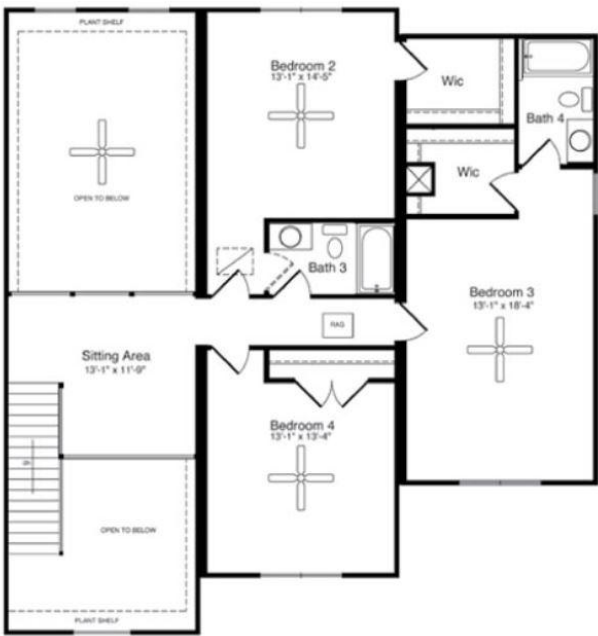
- ☒ Green Certification
- ☒ Energy Star

The magnificence of this home can be appreciated immediately upon entering the two-story foyer. The first floor is highlighted by the dining room with optional tray ceiling, study, family room, living room and kitchen / nook combo. The master suite offers his and her walk-in closets and an optional walk-out bay window. Three additional bedrooms and two additional baths are located on the second level.

#### FIRST FLOOR



#### SECOND FLOOR



YOUR  
NEW HOME  
CONSULTANT

Hi, I'm , your personal Modular Home Consultant

I would be happy to help you with any questions you may have. You can contact me on my direct number at or email me at .