

THE LOGAN. HCT-005

Traditional



SPECIFICATIONS

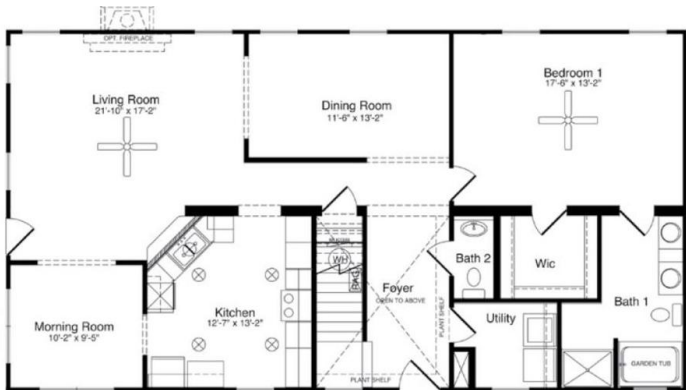
SQ. FT.	2077
BEDROOMS:	3
BATHROOMS:	2.5
LEVELS:	2.0

OPTIONAL FEATURES

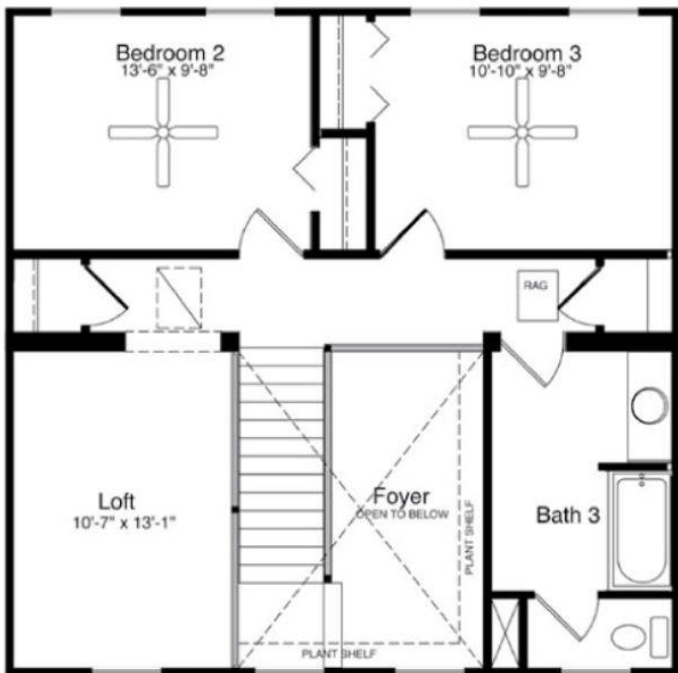
- ☒ Green Certification
- ☒ Energy Star

Enjoy both convenience and style! In the Logan, it all starts with the uniquely designed living room that opens to a morning room and the formal dining room. The kitchen can be accessed from two sides and the master suite is secluded at the far end of the first level for added privacy. Two additional bedrooms and a full bath complete the second floor.

FIRST FLOOR



SECOND FLOOR



YOUR
NEW HOME
CONSULTANT



Hi, I'm Justin Bryant, your personal Modular Home Consultant

I would be happy to help you with any questions you may have. You can contact me on my direct number at **(877) 410-6334** or email me at justin.bryant@impresamodular.com.