

THE LENIOR. HCT-004

Traditional



SPECIFICATIONS

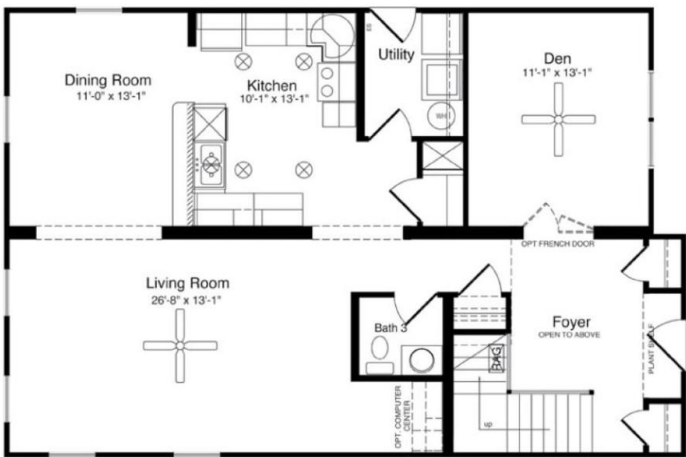
SQ. FT.	2086
BEDROOMS:	3
BATHROOMS:	2.5
LEVELS:	2.0

OPTIONAL FEATURES

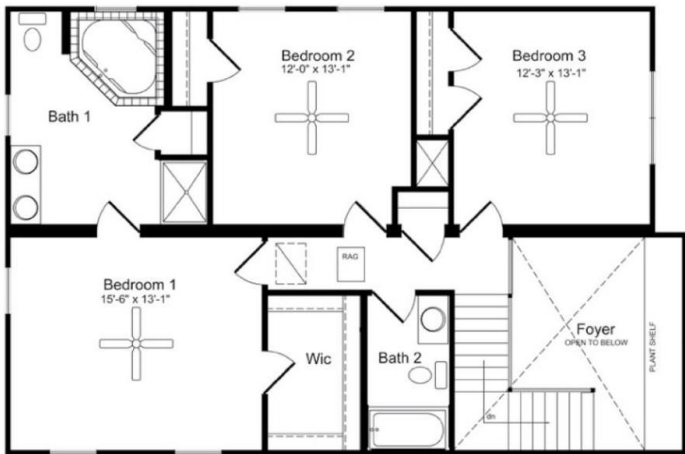
- ☒ Green Certification
- ☒ Energy Star

The first floor of The Lenoir features a formal dining room, a roomy kitchen and an elongated living room. The den, with optional French doors completes the first floor. Three bedrooms, two full baths and a breathtaking view into the foyer below encompass the remainder of the design of this two-story home.

FIRST FLOOR



SECOND FLOOR



YOUR
NEW HOME
CONSULTANT



Hi, I'm Consultant Sales, your personal Modular Home Consultant

I would be happy to help you with any questions you may have. You can contact me on my direct number at **Not Available** or email me at contact@expressmodular.com.