



SPECIFICATIONS

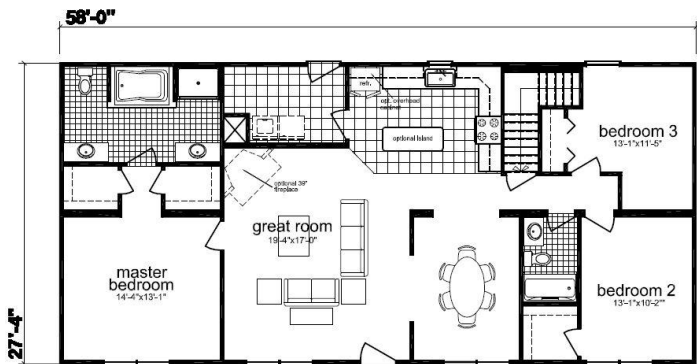
SQ. FT.	1587
BEDROOMS:	3
BATHROOMS:	2.0
LEVELS:	1.0

OPTIONAL FEATURES

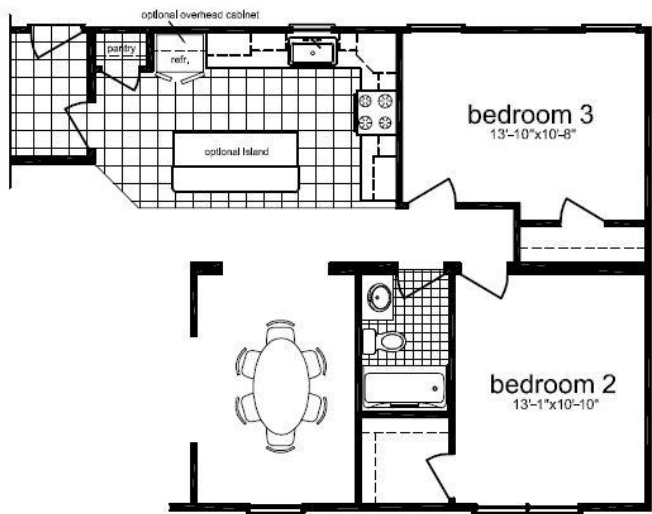
- ☒ Green Certification ☒ Energy Star

Inside this Ranch Style home plan, there is an open floor plan that gives a sense of spaciousness and added flexibility. The Master bedroom has his and her closets that are sure to please the owner's, along with double sinks in the master bath. Utility room/mud room has enough space to add a shelf or sink.

FIRST FLOOR



CRAWL SPACE OPTIONAL



YOUR
NEW HOME
CONSULTANT



Hi, I'm David Lipa, your personal Modular Home Consultant

I would be happy to help you with any questions you may have. You can contact me on my direct number at (877) 419-1478 or email me at David.Lippa@impresamodular.com.