

# SOMERTON . NNC-046

Traditional



## SPECIFICATIONS

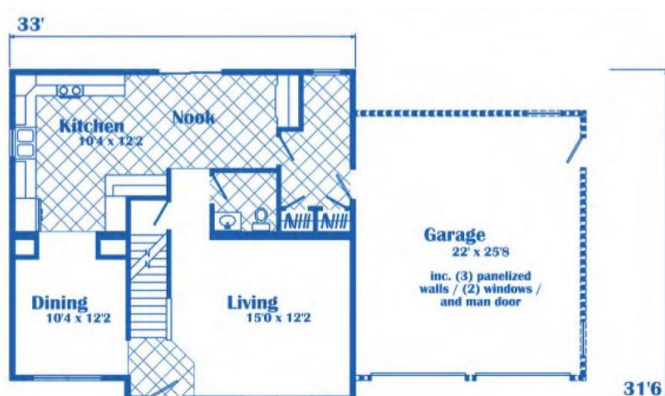
SQ. FT.	2516
BEDROOMS:	4
BATHROOMS:	2.5
LEVELS:	2.0

## OPTIONAL FEATURES

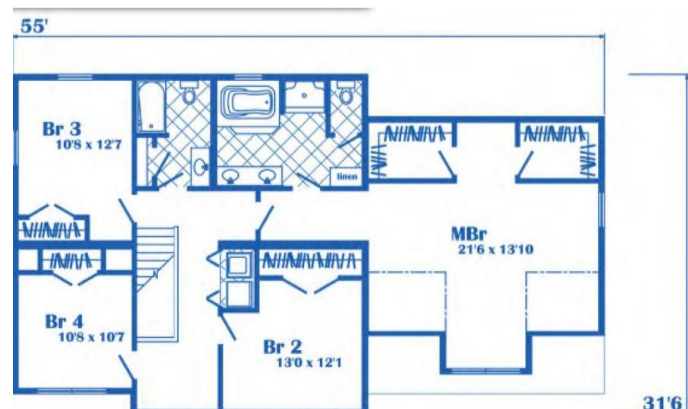
- Green Certification
  - Energy Star
  - Garage
- Included

This home envelops you with Southern Charm. Imagine welcoming your guests onto the front porch of this traditional country home. The Somerton has an L shaped kitchen/breakfast nook. There is a mud room right as you come in the back door. The washer and dryer are conveniently located on the second floor. The master bedroom hosts two walk in closets and a garden tub.

### FIRST FLOOR



### SECOND FLOOR



YOUR  
NEW HOME  
CONSULTANT



## Hi, I'm , your personal Modular Home Consultant

I would be happy to help you with any questions you may have. You can contact me on my direct number at or email me at .

