



SPECIFICATIONS

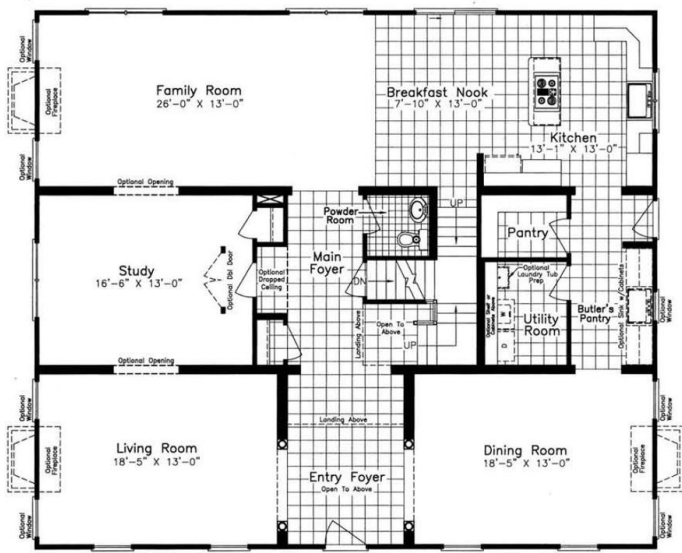
SQ. FT.	3770
BEDROOMS:	4
BATHROOMS:	3.5
LEVELS:	2.0

OPTIONAL FEATURES

- ☒ Green Certification
- ☒ Energy Star

Only one word describes this home plan, Magnificent! This plan is very well thought out to make living and entertaining easy. You have the open floor plan in the back of the home with the kitchen and breakfast nook flowing into the family room. The front boost the formal dining and living room. This plan has a dream kitchen for the cook in the family with not only a pantry but a butler's pantry as well. On the second floor each bedroom has access to a bath room from their bedroom. Master bedroom has a big double walk in closet.

FIRST FLOOR



SECOND FLOOR



YOUR
NEW HOME
CONSULTANT

Hi, I'm , your personal Modular Home Consultant

I would be happy to help you with any questions you may have. You can contact me on my direct number at or email me at .