



SPECIFICATIONS

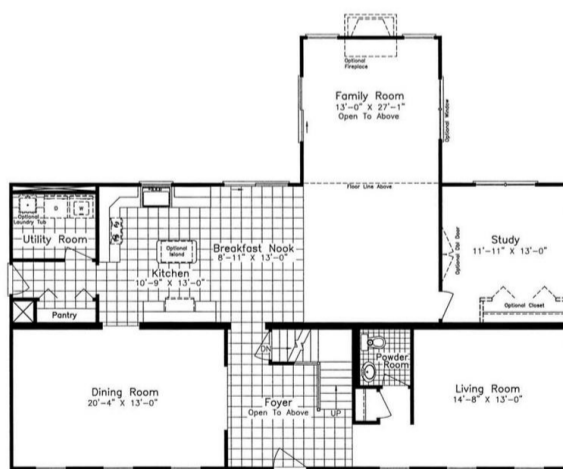
SQ. FT.	3340
BEDROOMS:	4
BATHROOMS:	2.5
LEVELS:	2.0

OPTIONAL FEATURES

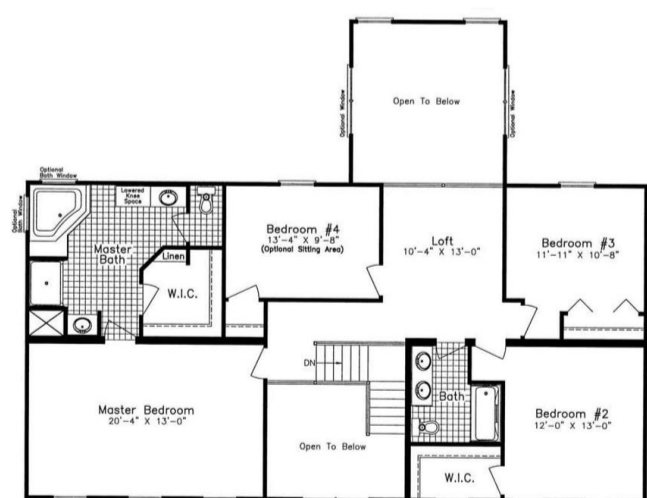
- Green Certification
- Energy Star

The Stonebridge NNA is a beautiful home plan that features a spacious, open-concept living area with a large kitchen, dining, and living room. The home has four bedrooms and 2.5 bathrooms, including a large master suite with a walk-in closet and ensuite bathroom. The exterior of the home features a charming front porch that is perfect for outdoor entertaining and a 3 car garage. This home plan is designed with flexibility in mind, making it easy to customize to meet your specific needs and preferences. With its modern design and comfortable living spaces, the Stonebridge NNA is the perfect choice for families of all sizes.

FIRST FLOOR



SECOND FLOOR



YOUR
NEW HOME
CONSULTANT



Hi, I'm , your personal Modular Home Consultant

I would be happy to help you with any questions you may have. You can contact me on my direct number at or email me at .

