

# WOODMONT. NNA-054

Traditional



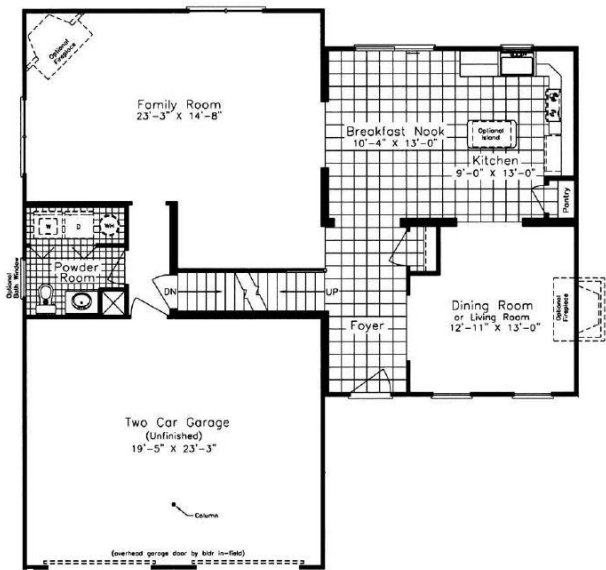
## SPECIFICATIONS

SQ. FT.	2572
BEDROOMS:	3
BATHROOMS:	2.5
LEVELS:	2.0

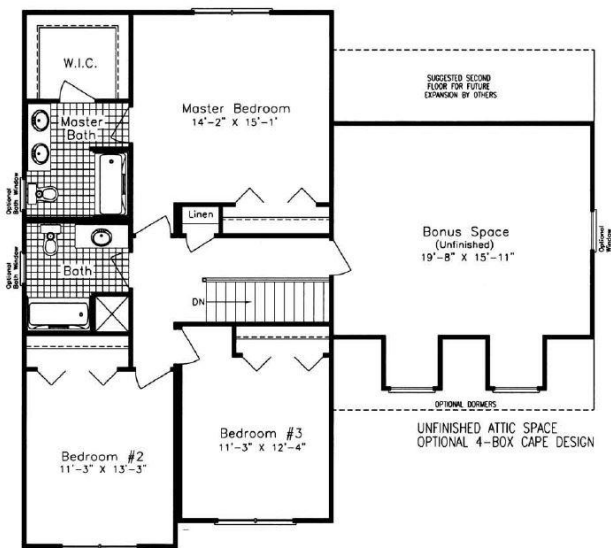
## OPTIONAL FEATURES

- ☒ Green Certification
- ☒ Energy Star
- ☒ Garage Included

### FIRST FLOOR



### SECOND FLOOR



YOUR  
NEW HOME  
CONSULTANT



Hi, I'm Justin Bryant, your personal Modular Home Consultant

I would be happy to help you with any questions you may have. You can contact me on my direct number at **(877) 410-6334** or email me at [justin.bryant@impresamodular.com](mailto:justin.bryant@impresamodular.com).