



SPECIFICATIONS

SQ. FT.	2630
BEDROOMS:	3
BATHROOMS:	2.5
LEVELS:	2.0

OPTIONAL FEATURES

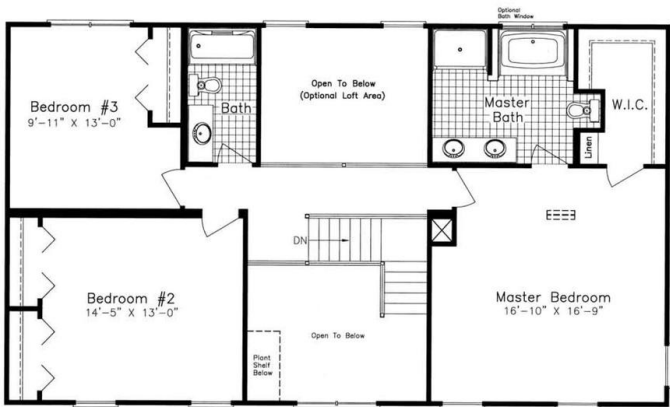
- ☒ Green Certification

This Colonial Style home plan is so versatile with the informal side in the back of the home and then in the front of the home you have the formal dining and living room. The second floor boost 3 bedrooms and 2 baths, master bath has a garden tub and a nice large walk in closet.

FIRST FLOOR



SECOND FLOOR



YOUR
NEW HOME
CONSULTANT

Hi, I'm , your personal Modular Home Consultant

I would be happy to help you with any questions you may have. You can contact me on my direct number at or email me at .