



SPECIFICATIONS

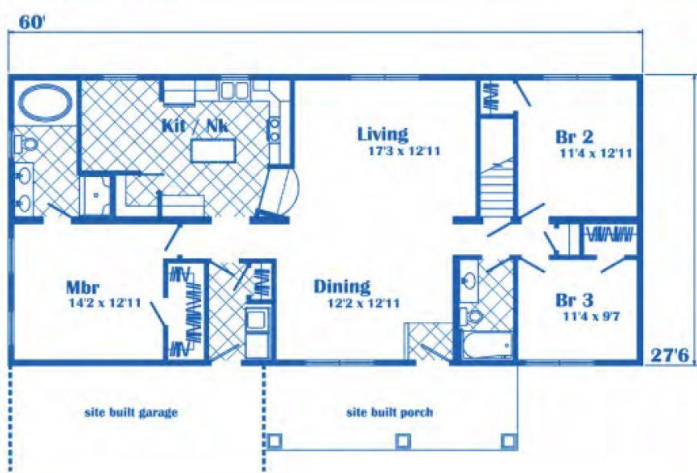
SQ. FT.	1650
BEDROOMS:	3
BATHROOMS:	2
LEVELS:	1

OPTIONAL FEATURES

- ☒ Green Certification
- ☒ Energy Star

This spacious kitchen includes a center island and a generous breakfast nook that is perfect for those days that are busy and everyone eats at a different time. The master bedroom has a great walk in closet to keep you organized and a garden tub to relax in after a long day.

FIRST FLOOR



YOUR
NEW HOME
CONSULTANT



Hi, I'm David Lipa, your personal Modular Home Consultant

I would be happy to help you with any questions you may have. You can contact me on my direct number at **(877) 419-1478** or email me at **David.Lippa@impresamodular.com**.