



SPECIFICATIONS

SQ. FT.	2600
BEDROOMS:	4
BATHROOMS:	2.5
LEVELS:	2.0

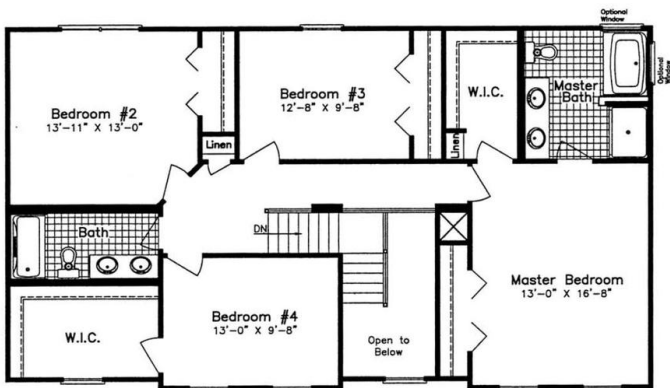
OPTIONAL FEATURES

- ☒
 Green Certification
- ☒
 Energy Star

FIRST FLOOR



SECOND FLOOR



YOUR  
 NEW HOME  
 CONSULTANT



Hi, I'm Justin Bryant, your personal Modular Home Consultant

I would be happy to help you with any questions you may have. You can contact me on my direct number at **(877) 410-6334** or email me at [justin.bryant@impresamodular.com](mailto:justin.bryant@impresamodular.com).