

WARFIELD . NNA-043

Traditional



SPECIFICATIONS

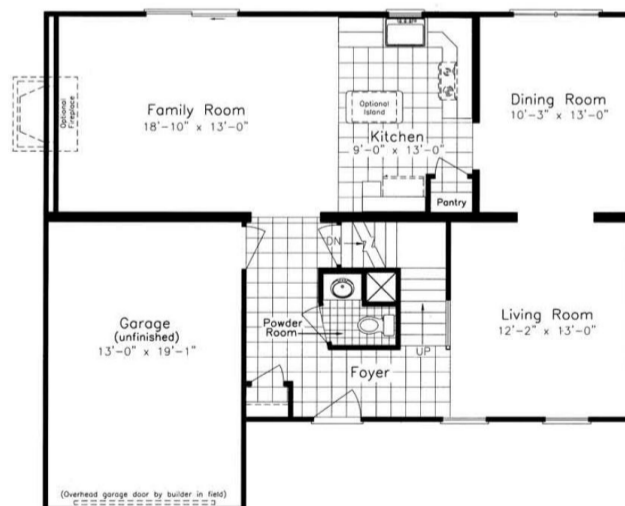
SQ. FT.	2285
BEDROOMS:	4
BATHROOMS:	2.5
LEVELS:	2.0

OPTIONAL FEATURES

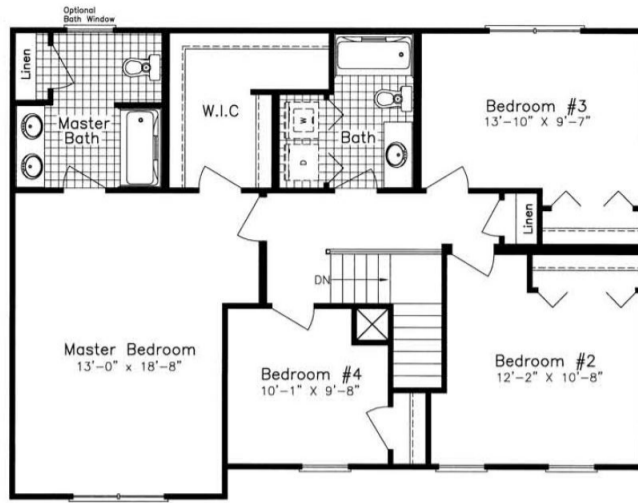
- Green Certification
- Energy Star

This home has great flow to it. When entering the foyer you can go from the living room into the dining room, then kitchen, family room and then you are back at the foyer. The foyer has a powder room and a coat closet. Washer and dryer are efficiently located in the hall bath surround by all the bedrooms. Master bedroom has a master bath with a garden tub and his and hers vanity.

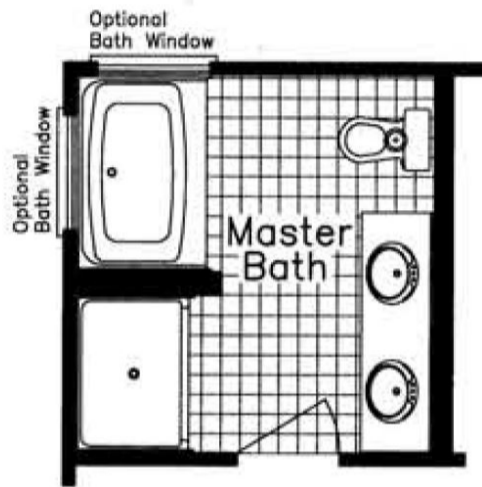
FIRST FLOOR



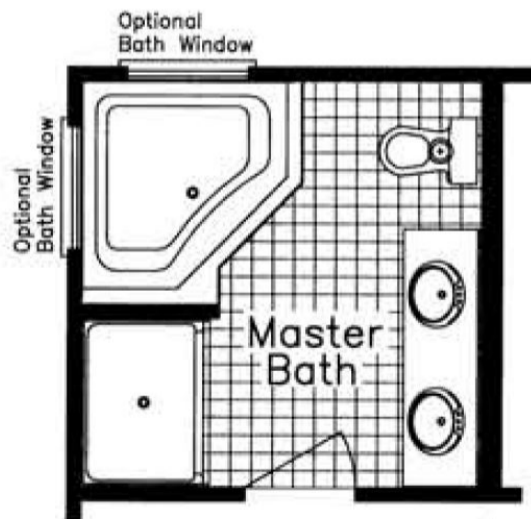
SECOND FLOOR



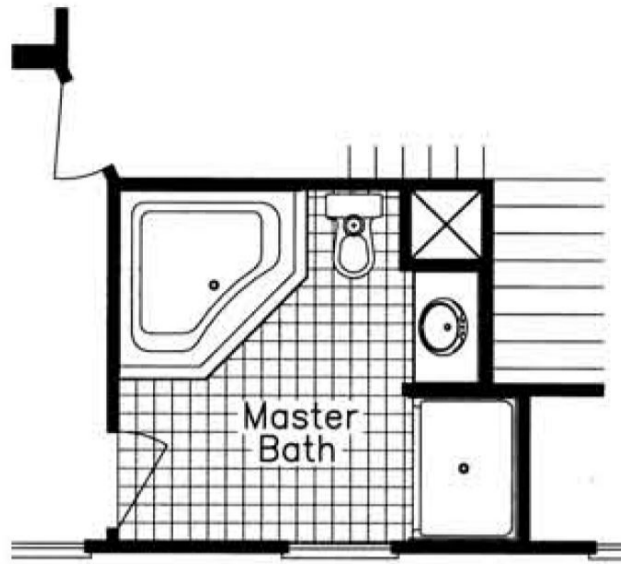
OPTIONAL MASTER BATH I



MASTER BATH II



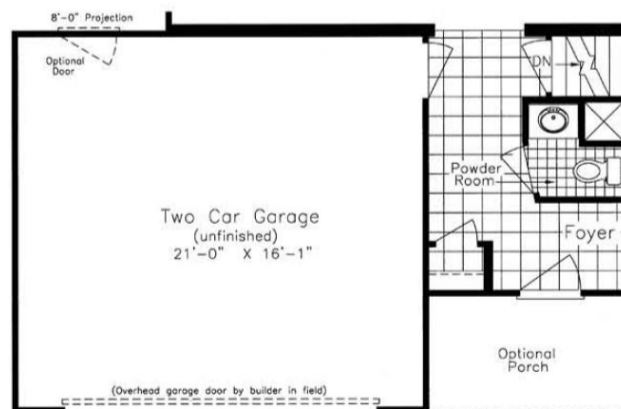
MASTER BATH OPTION WITH TWO CAR GARAGE ONLY



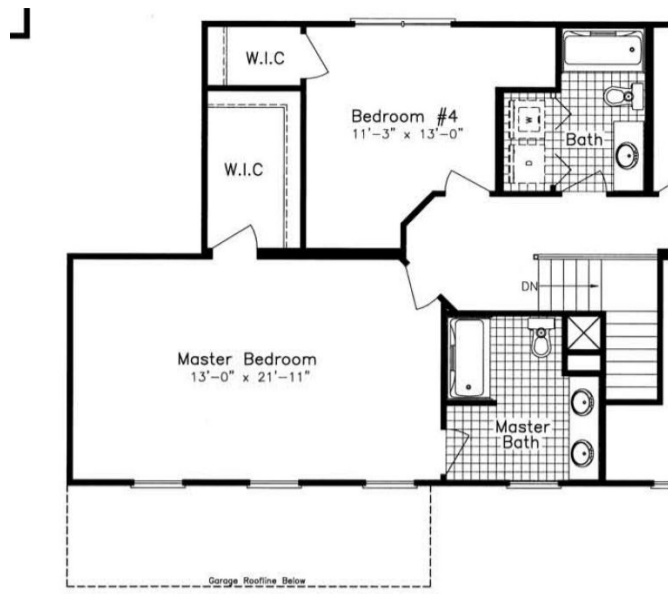
OPTIONAL HALL BATH



TWO CAR GARAGE OPTION



SECOND FLOOR PLAN - TWO CAR GARAGE OPTION



**YOUR
NEW HOME
CONSULTANT**



Hi, I'm , your personal Modular Home Consultant

I would be happy to help you with any questions you may have. You can contact me on my direct number at or email me at .

