

HUNTINGTON . NNA-033

Traditional



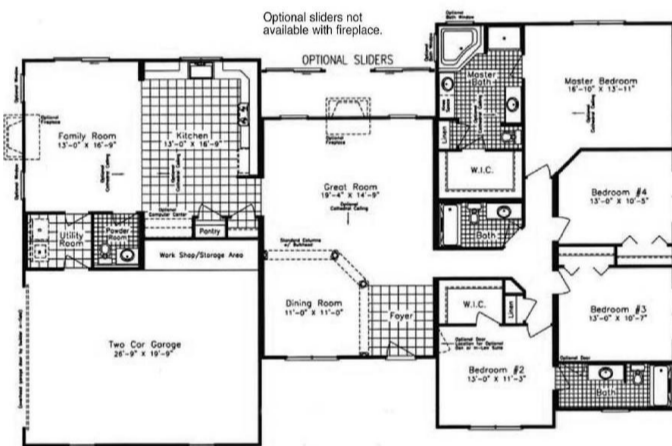
SPECIFICATIONS

SQ. FT.	2390
BEDROOMS:	4
BATHROOMS:	3.5
LEVELS:	1.0

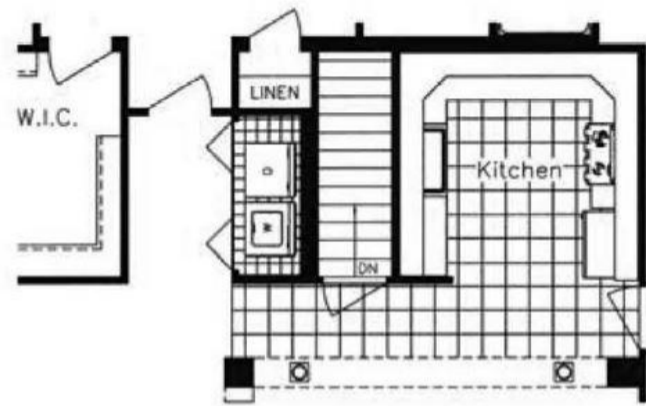
OPTIONAL FEATURES

- Green Certification
- Energy Star

FIRST FLOOR



OPTIONAL BASEMENT LAYOUT



YOUR
NEW HOME
CONSULTANT



Hi, I'm David Lipa, your personal Modular Home Consultant

I would be happy to help you with any questions you may have. You can contact me on my direct number at **(877) 419-1478** or email me at David.Lippa@impresamodular.com.

