

BEACH HOUSE. NAS-003

CoastalJersey ShoreTiny HouseTraditional



SPECIFICATIONS

SQ. FT.	570
BEDROOMS:	2
BATHROOMS:	1.0
LEVELS:	1.0

OPTIONAL FEATURES

- ☒ Green Certification
- ☒ Energy Star

The Beach House NAS is a stunning modular house plan designed for coastal living. This home has a total living area of 570 square feet and features 2 bedrooms, one bathroom, and an open living area that encompasses the kitchen and great room.

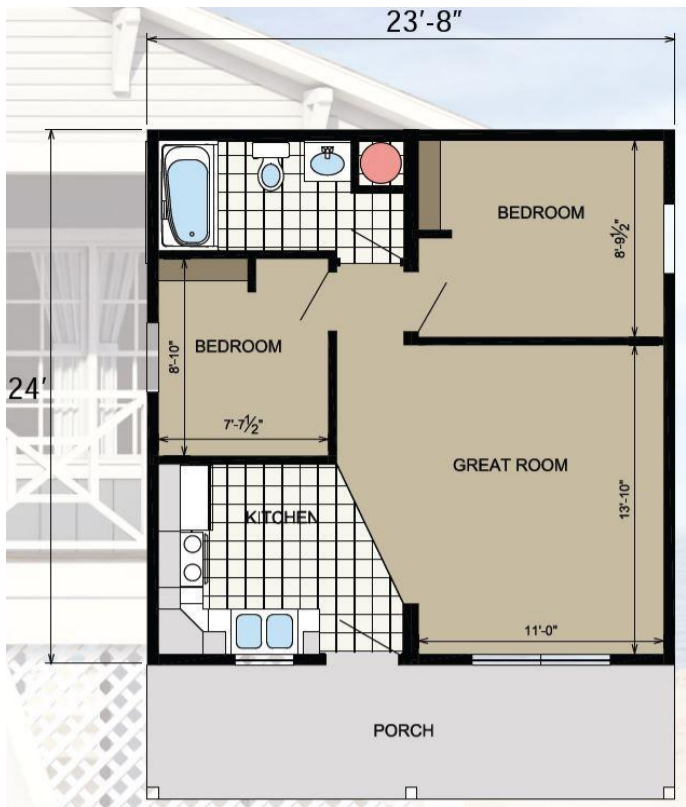
As you enter the home, you are greeted by a spacious living room that offers plenty of natural light and an open floor plan that flows seamlessly into the kitchen area. The kitchen is equipped with modern appliances and ample counter space, making it perfect for cooking and entertaining.

The master bedroom is located on one side of the home and features a large walk-in closet. The other bedroom is located on the opposite side of the home, offering some privacy and comfort for the homeowners and their guests. The bathroom is located between the bedrooms is equipped with shower and tub combination.

The Beach House NAS offers a spacious covered porch that offers the perfect place to relax and enjoy the outdoors.

This house plan is designed to withstand the elements of coastal living, with features such as hurricane-rated windows and doors, elevated foundation, and reinforced roof structure. It is also customizable, allowing homeowners to make changes and additions to fit their unique needs and preferences. Overall, the Beach House NAS is a beautiful and functional home that is perfect for families or individuals looking for a comfortable and stylish living space in a coastal setting.

FIRST FLOOR



YOUR
NEW HOME
CONSULTANT

Hi, I'm , your personal Modular Home Consultant

I would be happy to help you with any questions you may have. You can contact me on my direct number at or email me at .