

# CHESAPEAKE . NNA-016

Chalet Contemporary Traditional



## SPECIFICATIONS

SQ. FT.	1295
BEDROOMS:	3
BATHROOMS:	2.0
LEVELS:	1.0

## OPTIONAL FEATURES

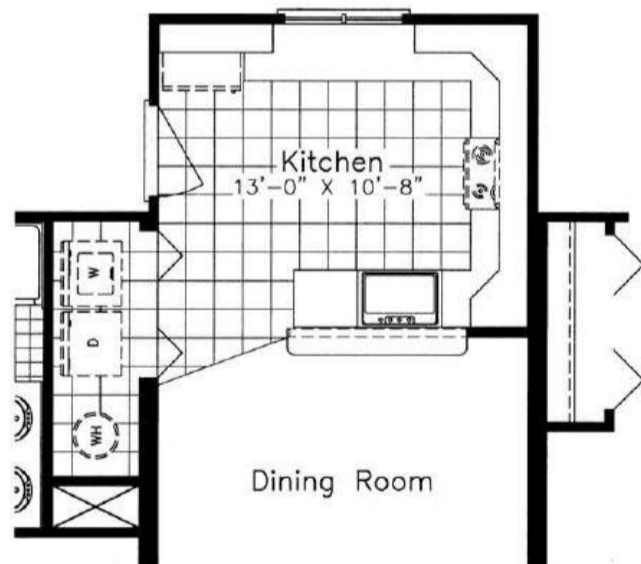
- Green Certification
- Energy Star

The Chesapeake is destined to be a country or lake home with its trapezoid front windows and its wide open living space. This home has 3 bedrooms and two baths. The country kitchen transitions right into the great room for plenty of family gatherings. The Master Bath has a soaking tub perfectly located under two windows for gazing out while relaxing.

### FIRST FLOOR



### OPTIONAL KITCHEN LAYOUT



YOUR  
NEW HOME  
CONSULTANT



Hi, I'm , your personal Modular Home Consultant

I would be happy to help you with any questions you may have. You can contact me on my direct number at or email me at .

