

# WINCHESTER . NNA-009

Traditional



## SPECIFICATIONS

SQ. FT.	2575
BEDROOMS:	3
BATHROOMS:	2.5
LEVELS:	2.0

## OPTIONAL FEATURES

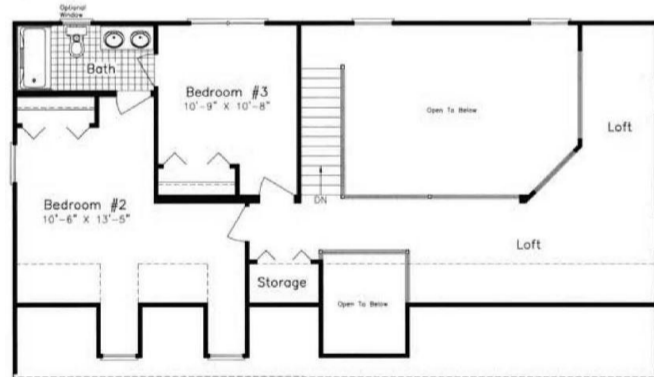
- Green Certification
- Energy Star

This house is full on nooks and crannies. You have a walk in closet right across from the utility room, a space for storage on the second floor plus lots for loft space you can use for storage. When you walk into the foyer you have a powder room on your left and then on the right you have the breakfast nook and kitchen that is open to the large great room. The master bedroom is located on the main level of the home.

### FIRST FLOOR



### SECOND FLOOR



YOUR  
NEW HOME  
CONSULTANT



Hi, I'm , your personal Modular Home Consultant

I would be happy to help you with any questions you may have. You can contact me on my direct number at or email me at .

