

# ASHVILLE . NNA-005

Traditional



## SPECIFICATIONS

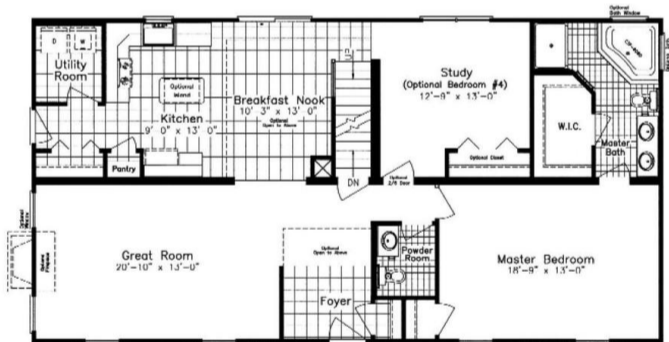
SQ. FT.	1480
BEDROOMS:	1
BATHROOMS:	1.5
LEVELS:	1.5

## OPTIONAL FEATURES

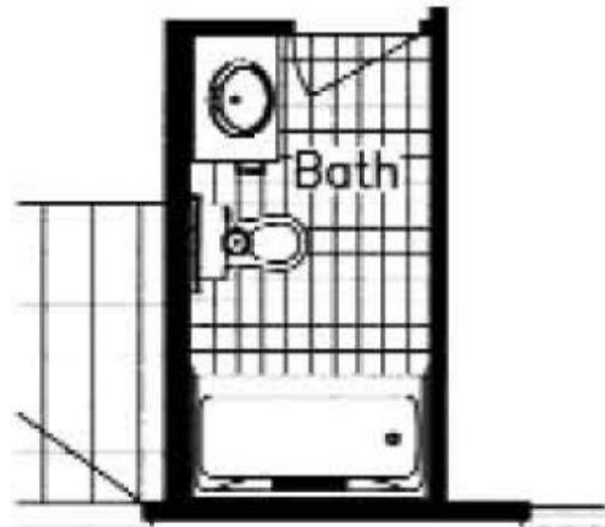
- Green Certification
- Energy Star

This Country style home is so picturesque with its dormers and long covered porch. Walking into the foyer you can feel immense size of this house with its open kitchen/breakfast area. The master bath as a corner garden tub, extra large walk in closet and double vanity for the owners to relax after a stressful day.

### FIRST FLOOR



### OPTIONAL FULL BATH



YOUR  
NEW HOME  
CONSULTANT



Hi, I'm Justin Bryant, your personal Modular Home Consultant

I would be happy to help you with any questions you may have. You can contact me on my direct number at **(877) 410-6334** or email me at [justin.bryant@impresamodular.com](mailto:justin.bryant@impresamodular.com).

