

DRESDEN II. CBE-023

Traditional



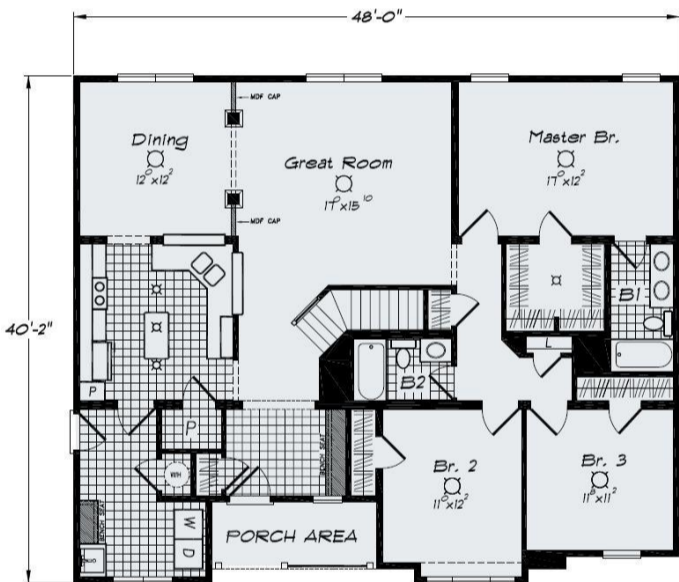
SPECIFICATIONS

SQ. FT.	1819
BEDROOMS:	3
BATHROOMS:	2.0
LEVELS:	1.5

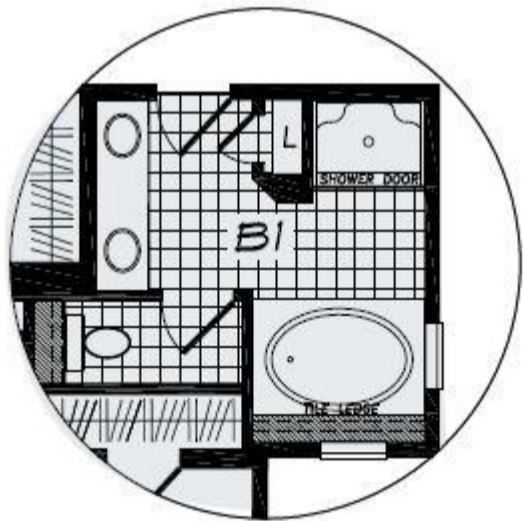
OPTIONAL FEATURES

- ☒ Green Certification
- ☒ Energy Star

FIRST FLOOR



OPTIONAL BATH



OPTIONAL BATH
54'-0" CENTER MODULE LENGTH
HOUSE = 1896 SQ FT WITH OPTIONAL BATH

YOUR
NEW HOME
CONSULTANT

Hi, I'm , your personal Modular Home Consultant

I would be happy to help you with any questions you may have. You can contact me on my direct number at or email me at .