

LANGDON . CSB-2505

Traditional



SPECIFICATIONS

SQ. FT.	2880
BEDROOMS:	5
BATHROOMS:	3.5
LEVELS:	2

OPTIONAL FEATURES

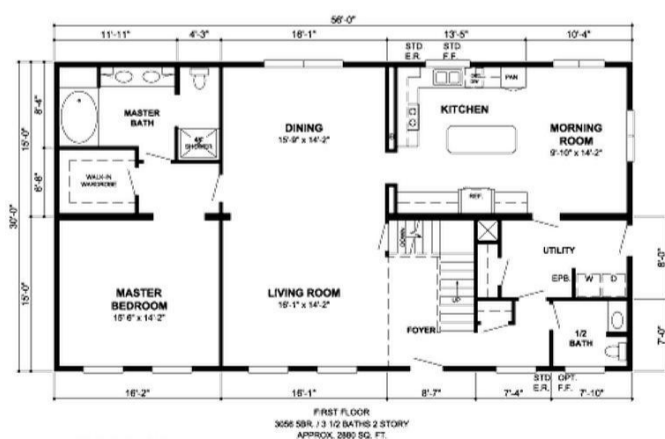
Energy Star

The Langdon design is a spacious and elegant two-story home plan. It features 5 bedrooms and 3.5 bathrooms, spread out over 2,880 square feet of living space. The first floor of the Langdon includes a welcoming foyer, a formal dining room, a gourmet kitchen with a morning room. The kitchen is equipped with a large center island, ample counter space, and a separate laundry room and a half bath located off of the foyer. The Langdon features a luxurious owner's suite, which includes a large walk-in closet, and a spa-like bathroom with a soaking tub, a separate shower, and dual vanities.

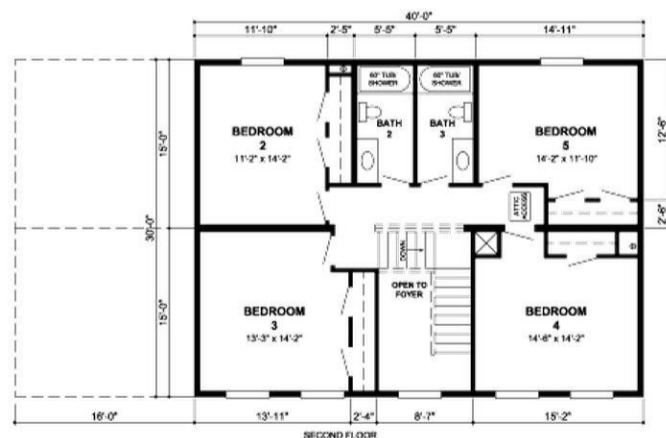
The second floor also includes four additional bedrooms and two full bathrooms.

The Langdon design is perfect for families who want a spacious and comfortable home with plenty of room for entertaining and relaxing.

FIRST FLOOR



SECOND FLOOR



YOUR
NEW HOME
CONSULTANT



Hi, I'm , your personal Modular Home Consultant

I would be happy to help you with any questions you may have. You can contact me on my direct number at or email me at .

