



SPECIFICATIONS

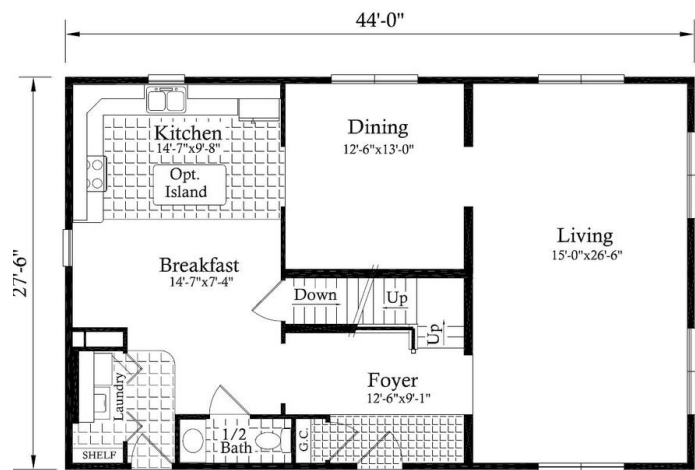
SQ. FT.	2420
BEDROOMS:	4
BATHROOMS:	2.5
LEVELS:	2.0

OPTIONAL FEATURES

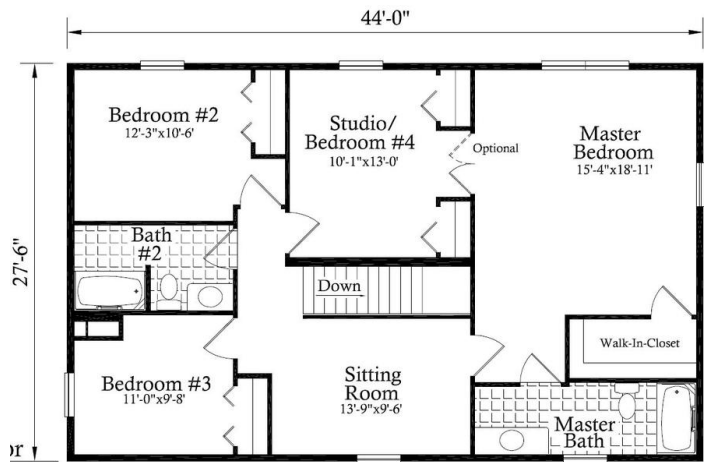
- ☒ Green Certification
- ☒ Energy Star

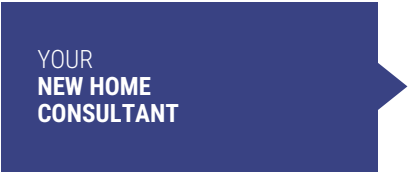
The Master Suite, Features a grand, Fully - appointed bath, spacious walk in closet, plus an additional room off the master suite that can be used for a studio or sitting room to create a true "Master's Retreat." You have 3 additional bedrooms, plus a full bath on the second level. First level has a powder room and a utility room with a shelf for store all your laundry products.

FIRST FLOOR



SECOND FLOOR





Hi, I'm , your personal Modular Home Consultant

I would be happy to help you with any questions you may have. You can contact me on my direct number at or email me at .