

CONCORD . HTC-002

Traditional



SPECIFICATIONS

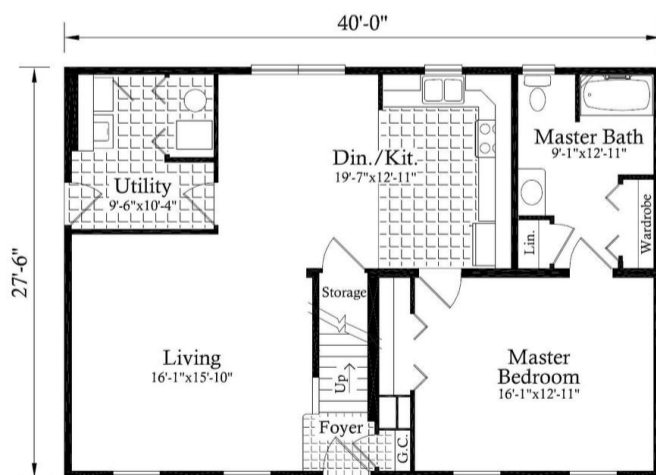
SQ. FT.	1100
BEDROOMS:	1
BATHROOMS:	1.0
LEVELS:	1.5

OPTIONAL FEATURES

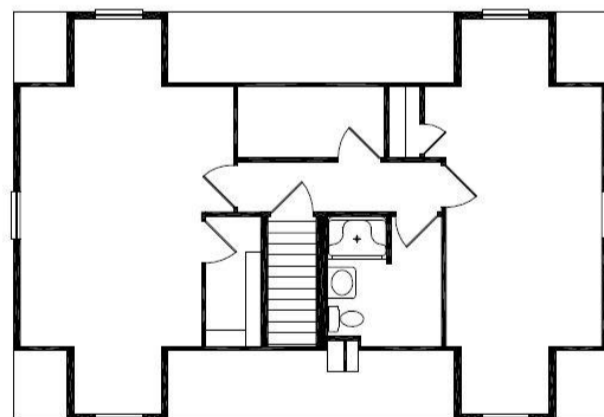
- Green Certification
- Energy Star

This floor plan is perfect for the person just beginning. It is complete with everything you need as is but when you get married and start a family you are able to finish the second floor with two bedrooms and a full bath. That makes it possible for this to be a 3 bedroom, 2 bath home. Kitchen and dining room are open to one another for friends and family to visit and chat while you are cooking.

FIRST FLOOR



PROPOSED SECOND FLOOR



YOUR
NEW HOME
CONSULTANT



Hi, I'm , your personal Modular Home Consultant

I would be happy to help you with any questions you may have. You can contact me on my direct number at or email me at .

